

# DAKOTA™ TURF TENDER ILLUSTRATED PARTS MANUAL



# **INTRODUCTION**

To ensure optimum performance and safety, always purchase genuine **DAKOTA** replacement parts and accessories. NEVER USE “WILL-FIT” REPLACEMENT PARTS AND ACCESSORIES MADE BY OTHER MANUFACTURERS. Using either inappropriate or unapproved replacement parts and accessories may result in progressive damage to the Turf Tender and voids the warranty of the **DAKOTA** Turf Tender.

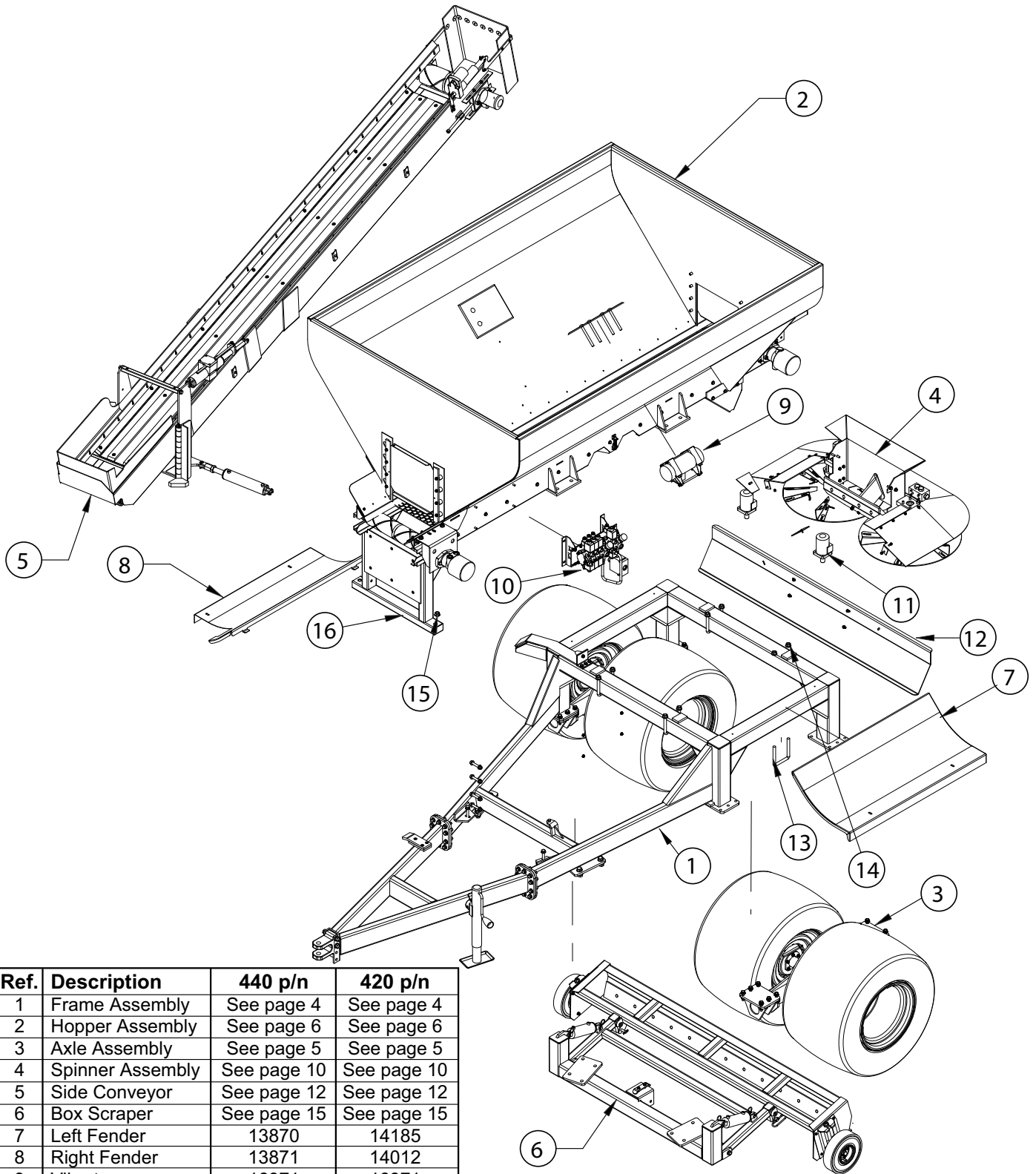
This manual provides a listing to the parts and assemblies that are available as replacement parts. For the most part, common hardware is not listed in this manual. Be sure, however, that when replacement of hardware is necessary, to replace with the same length, diameter, and grade.

The illustrations used in this Parts manual are for reference to replacement parts only. This manual is not to be used for assembly. If in need of replacement parts or in need of a replacement part not called out in this manual, contact an authorized Dakota dealer. To locate a local dealer, go to [www.dakotapeat.com](http://www.dakotapeat.com).

## **TABLE OF CONTENTS**

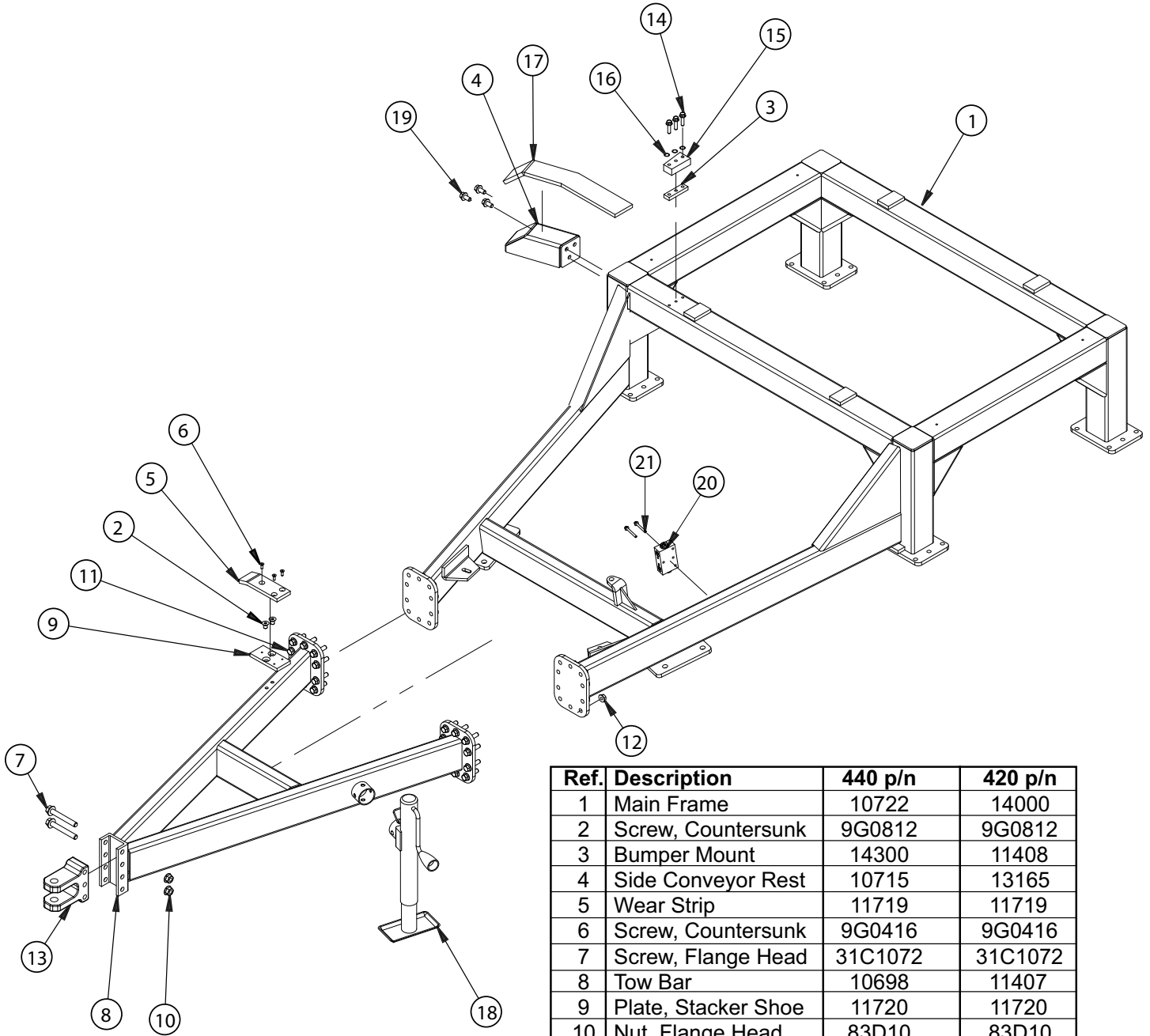
<b>Introduction .....</b>	<b>2</b>
<b>Full Machine 440, 420 .....</b>	<b>3</b>
<b>Frame Assembly 440, 420 .....</b>	<b>4</b>
<b>Axle Assembly 440, 420 .....</b>	<b>5</b>
<b>Hopper Assembly 440, 420 .....</b>	<b>6</b>
<b>Control Box 440, 420 .....</b>	<b>7</b>
<b>Drive Rollers 440, 420 .....</b>	<b>8</b>
<b>Main Conveyor 440, 420 .....</b>	<b>9</b>
<b>Valve Assembly 440, 420 .....</b>	<b>10</b>
<b>Spinner Assembly 440, 420 .....</b>	<b>11</b>
<b>Spinner 440, 420 .....</b>	<b>12</b>
<b>Side Conveyor Assembly 440, 420 .....</b>	<b>13</b>
<b>Side Conveyor Chute 440, 420 .....</b>	<b>14</b>
<b>Side Conveyor Saddle 440, 420 .....</b>	<b>15</b>
<b>Side Conveyor Tail Roller 440, 420 .....</b>	<b>15</b>
<b>Box Scraper 440, 420 .....</b>	<b>16</b>
<b>Debridger 440 .....</b>	<b>17</b>
<b>Electric Front Door 440, 420 .....</b>	<b>18</b>
<b>Optional Dump Door 440, 420 .....</b>	<b>19</b>
<b>Optional Hydraulic Rear Door 440 .....</b>	<b>20</b>
<b>Orbital Motor Reference .....</b>	<b>20</b>
<b>Full Machine 414, 412, 411 .....</b>	<b>21</b>
<b>Frame Assembly 414, 412, 411 .....</b>	<b>22</b>
<b>Axle Assembly 414, 412, 411 .....</b>	<b>23</b>
<b>Hopper Assembly 414, 412, 411 .....</b>	<b>24</b>
<b>Drive Rollers 414, 412, 411 .....</b>	<b>25</b>
<b>Conveyor 414, 412, 411 .....</b>	<b>26</b>
<b>Spinner Assembly 414, 412, 411 .....</b>	<b>27</b>
<b>Spinner 414, 412, 411 .....</b>	<b>28</b>
<b>Manual control Box 414, 412, 411, 410 .....</b>	<b>29</b>
<b>Full Machine 410 .....</b>	<b>30</b>
<b>Frame Assembly 410 .....</b>	<b>31</b>
<b>Frame and Jackstand (John Deere) 410 .....</b>	<b>32</b>
<b>Frame and Jackstand (Toro) 410 .....</b>	<b>33</b>
<b>Wheel Hub 410 .....</b>	<b>34</b>
<b>Hopper Assembly 410 .....</b>	<b>35</b>
<b>Hopper Assembly (Continued) 410 .....</b>	<b>36</b>
<b>Drive Rollers 410 .....</b>	<b>37</b>
<b>Conveyor 410 .....</b>	<b>38</b>
<b>Spinner Assembly 410 .....</b>	<b>39</b>
<b>Spinner 410 .....</b>	<b>40</b>
<b>Hood Assembly 410 .....</b>	<b>41</b>
<b>Engine Package 410 .....</b>	<b>42</b>
<b>Harness Reference Guide .....</b>	<b>43</b>
<b>Warranty .....</b>	<b>44</b>

# FULL MACHINE 440, 420



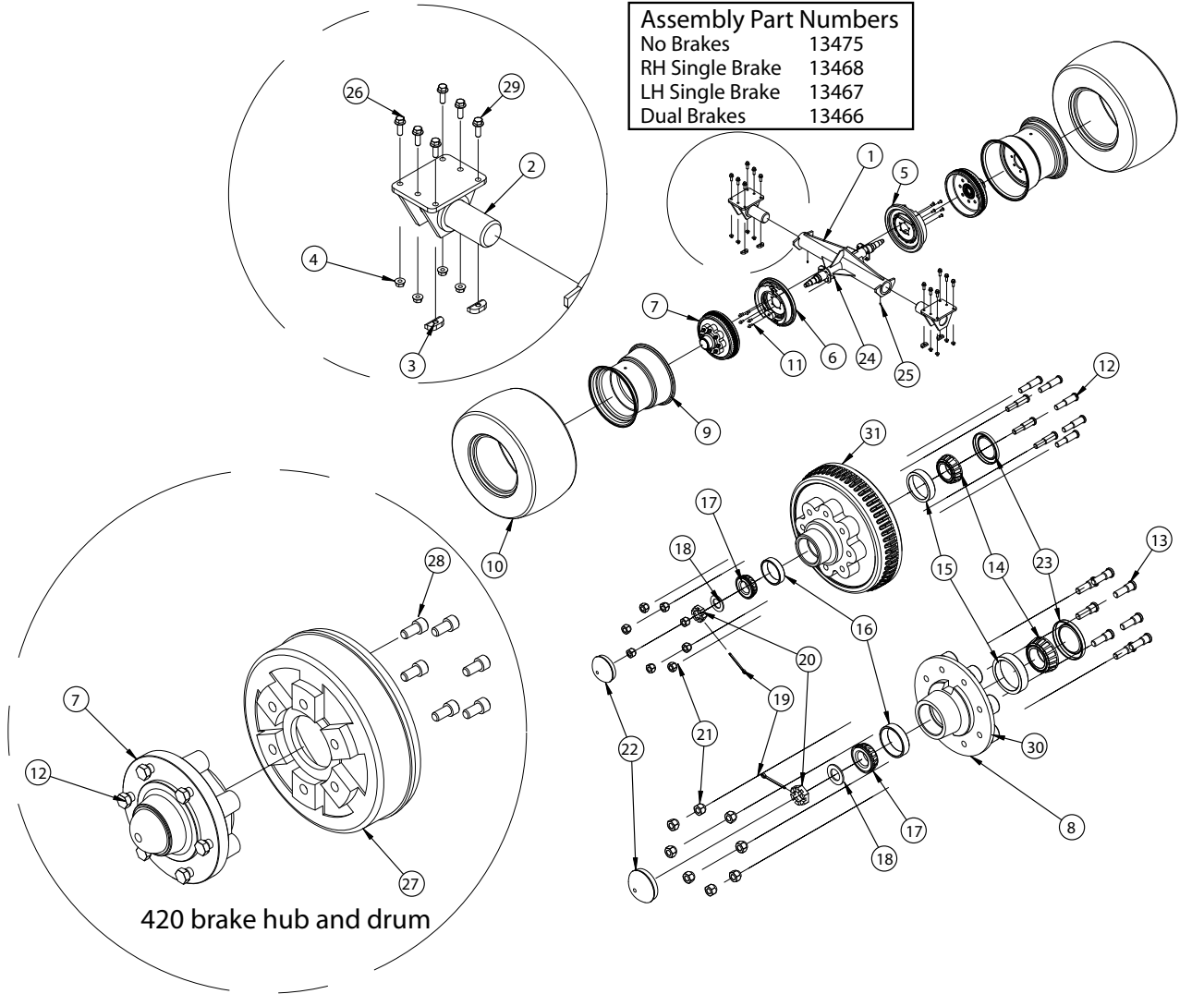
Ref.	Description	440 p/n	420 p/n
1	Frame Assembly	See page 4	See page 4
2	Hopper Assembly	See page 6	See page 6
3	Axle Assembly	See page 5	See page 5
4	Spinner Assembly	See page 10	See page 10
5	Side Conveyor	See page 12	See page 12
6	Box Scraper	See page 15	See page 15
7	Left Fender	13870	14185
8	Right Fender	13871	14012
9	Vibrator	16371	16371
10	Valve Assy	See page 9	See page 9
11	Spinner Motor	11051	10018
12	Rear Shield	10936	10009
13	U-Bolt	11889	12361
14	Nut, Flange Head	83D10	83D08
15	Nut, Flange Head	83D08	83D08
16	Hopper Support	17046	17046

# FRAME ASSEMBLY 440, 420



Ref.	Description	440 p/n	420 p/n
1	Main Frame	10722	14000
2	Screw, Countersunk	9G0812	9G0812
3	Bumper Mount	14300	11408
4	Side Conveyor Rest	10715	13165
5	Wear Strip	11719	11719
6	Screw, Countersunk	9G0416	9G0416
7	Screw, Flange Head	31C1072	31C1072
8	Tow Bar	10698	11407
9	Plate, Stacker Shoe	11720	11720
10	Nut, Flange Head	83D10	83D10
11	Screw, Flange Head	31C0828	31C0624
12	Nut, Flange Head	83D08	83D06
13	Hitch, Clevis	12078	10004
14	Screw, Flange Head	SS1C0640	SS1C0612
15	Bumper Stop	14299	11100
16	Washer	SS25E17	SS25E17
17	Side Conveyor Rest	11395	14070
18	Jack	10003	10003
19	Screw, Flange Head	31C0820	31C0820
20	Valve, Lock	11073	11073
21	Screw, Flange Head	35C0436	35C0436

# AXLE ASSEMBLY 440, 420



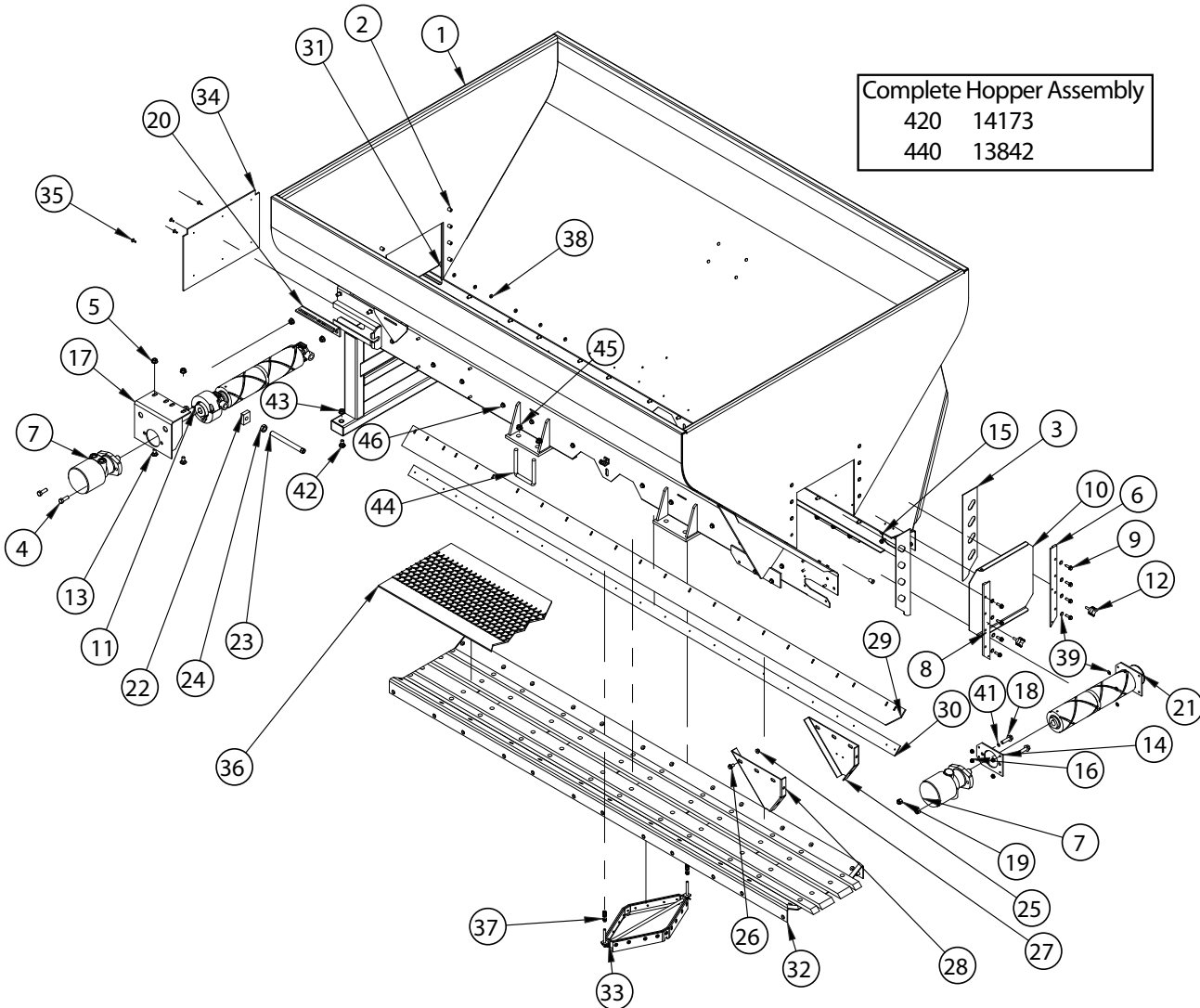
Ref.	Description	440 p/n	420 p/n
1	Axle	13469	11417
2	Axle Pivot	10685	11415
3	Pivot Stop	10691	N/A
4	Nut, Flange Head	83D08	83D08
5	Right Side Brake Assy	11150	11420
6	Left Side Brake Assy	11149	11419
7*	Brake Hub Assy	13437	12335
8*	Idler Hub Assy	13434	10050
9a	Wheel	13472	10051
9b	Wheel 20" (Optional)	13473	N/A
10a	Tire	11538	10052
10b	Tire 20" (Optional)	11384	N/A
11	Screw, Flange Head	31C0616	N/A
12	Stud, Brake Hub	13438	10209
13	Stud, Idler Hub	12202	10209
14	Bearing, Inner	13427	10205
15	Cup, Inner	13428	10203

Ref.	Description	440 p/n	420 p/n
16	Cup, Outer	13426	10204
17	Bearing, Outer	13425	10206
18	Washer, Hardened	17109	27E14
19	Cotter Pin	1F0532	1F0532
20	Nut, Castellated	13429	4D14
21	Nut, Self Centering	12201	12201
22	Hub Grease Cap	13430	10207
23	Grease Seal	13432	10208
24	Nut, Flange Head	83D06	83D06
25	Grease Fitting	10H25	10H25
26	Screw, Flange Head	31C0828	31C0824
27	Brake Drum	N/A	11416
28	Screw, Socket Head	N/A	74G0816
29	Screw, Flange Head	31C0824	N/A
30	Idler Hub	13433	12659
31	Drum	13436	13436

\* Includes Bearings, Hub Cap, Seal, and Lug Nuts

# HOPPER ASSEMBLY 440, 420

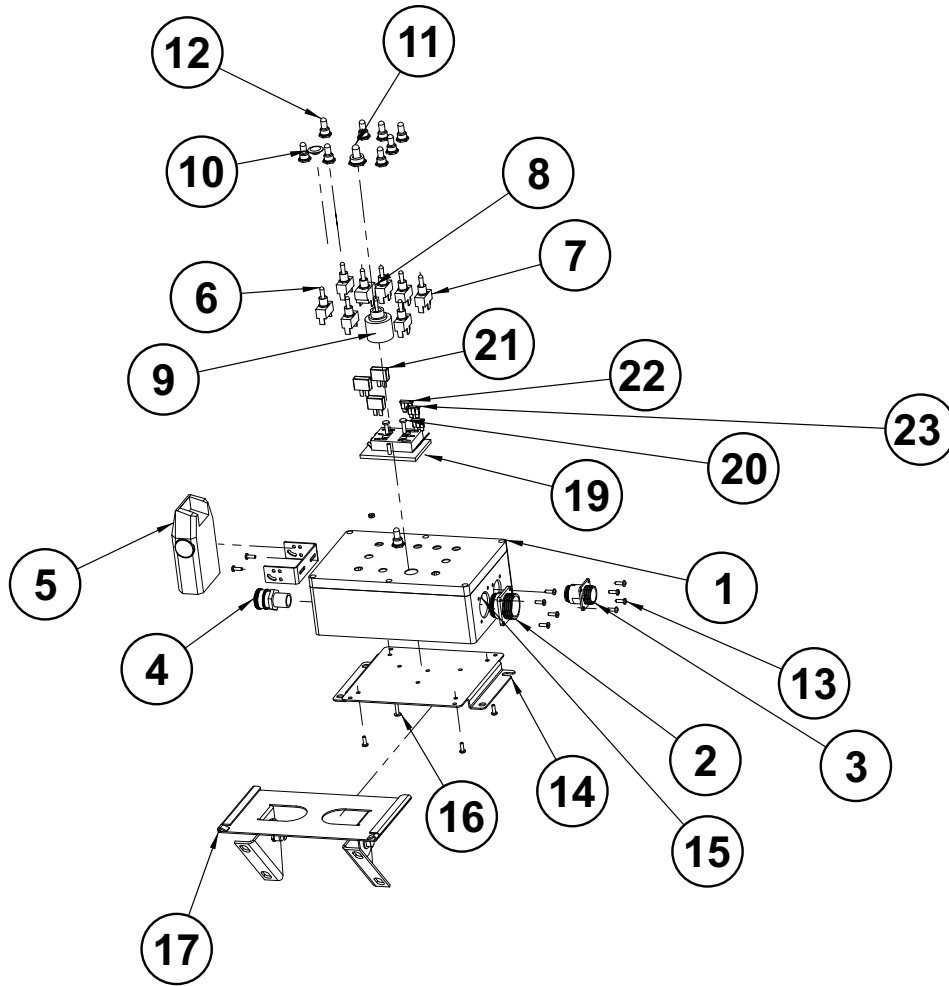
Complete Hopper Assembly			
420	14173		
440	13842		



Ref.	Description	440 p/n	420 p/n
1	Hopper	17047	18396
2	Rivnut	16724	16724
3	Door Seal	13553	13553
4	Screw, Hex Head	SS1C0828	SS1C0828
5	Nut, Flange Head	SS59D08	SS59D08
6	Door Track - RH	13367	13367
7	Motor	10201	10201
8	Door Track - LH	13368	13368
9	Screw, Flange Head	SS1C0520	SS1C0520
10	Panel, Door	12319	12319
11	Roller Assembly	10290	10290
12	Knob, Door Lock	10012	10012
13	Bolt, Carriage	SS10C0820	SS10C0820
14	Plate, Motor Mount	13769	13769
15	Screw, Flange Head	SS1C0516	SS1C0516
16	Nut, Flange Head	89D05	89D05
17	Motor Mount	10007	10007
18	Screw, Flange Head	SS1C0828	SS1C0828
19	Nut, Nylock	SS59D08	SS59D08
20	Support, Motor Mount	10008	10008
21	Roller Assembly	15710	15710
22	Nut	10015	10015
23	Adjustment Screw	10016	10016
24	Nut, Jam	7D12	7D12

Ref.	Description	440 p/n	420 p/n
25	Bracket, Rear Shield RH	10935	N/A
26	Screw, Flange Head	SS1C0516	SS1C0512
27	Nut, Flange Head	SS59D06	SS59D05
28	Bracket, Rear Shield LH	10934	N/A
29	Wiper	13575	13544
30	Strip, Wiper Back	13576	13545
31	Screw, Thread Rolling	SS84G2516	SS84G2516
32	Conveyor Floor	10992	10265
33	Return Wiper Assembly	14166	14166
34	Shield, Conveyor Front	11019	11019
35	Rivet, Pop	10289	10289
36	Belt, Main Conveyor	13589	13588
	Belt, Main - Laced	11486	N/A
37	Spring, Return Wiper	10302	10302
38	Washer	14792	14792
39	Washer	SS25E15	SS25E15
40	Washer	SS25E17	SS25E17
41	Washer	SS25E21	SS25E21
42	Screw, Flange Head	35C0856	35C0856
43	Nut	83D08	83D08
44	U-Bolt	11889	12361
45	Nut	83D10	83D08
46	Screw, Self-Tapping	SS1C0616	SS1C0616

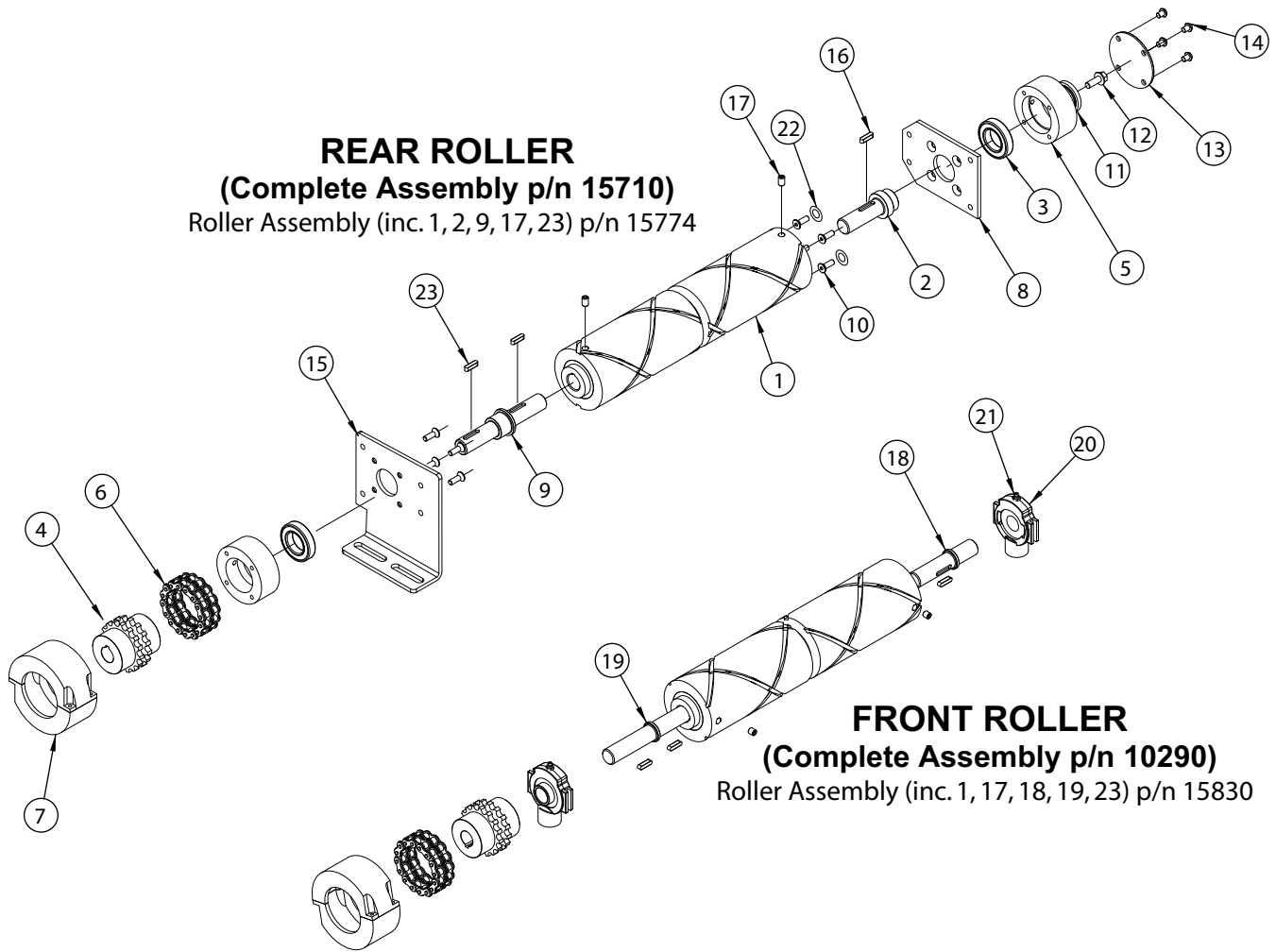
# CONTROL BOX 440, 420



Ref.	p/n	Description
1	14378	Control Box
2	11168	Cannon Plug
3	11169	Cannon Plug
4	11154	Strain Relief
5	11157	Brake Controller
6	11171	Switch - On-Off-On
7	11170	Switch - Momentary On-Off-On
8	11176	Switch
9	11178	Switch
10	21433	Plug
11	11175	Switch Boot
12	10192	Switch Boot
13	87G0808	Machine Screw
14	14023	Bracket
15	12D08	Nut
16	87G0816	Machine Screw
17	12031	Mount
18*	20609	Lid Screw
19	20607	Fuse Block
20	5G1220	Machine Screw w/Lock Washer
21	20627	Circuit Breaker 20 Amp
22	12120	Fuse 30 Amp
23	15494	Fuse 2 Amp

\* Not Illustrated

# DRIVE ROLLERS 440, 420



## REAR ROLLER

(Complete Assembly p/n 15710)

Roller Assembly (inc. 1, 2, 9, 17, 23) p/n 15774

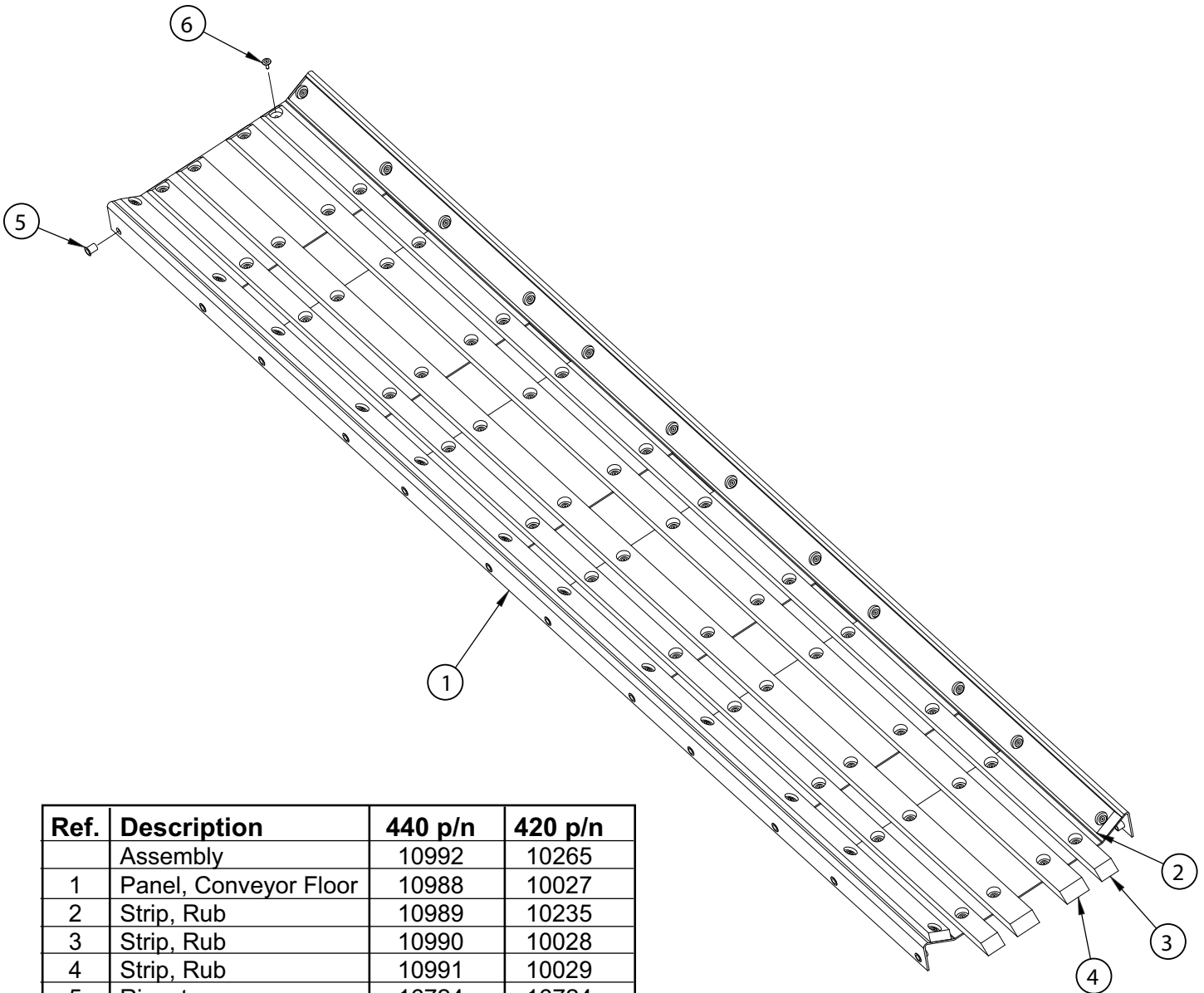
## FRONT ROLLER

(Complete Assembly p/n 10290)

Roller Assembly (inc. 1, 17, 18, 19, 23) p/n 15830

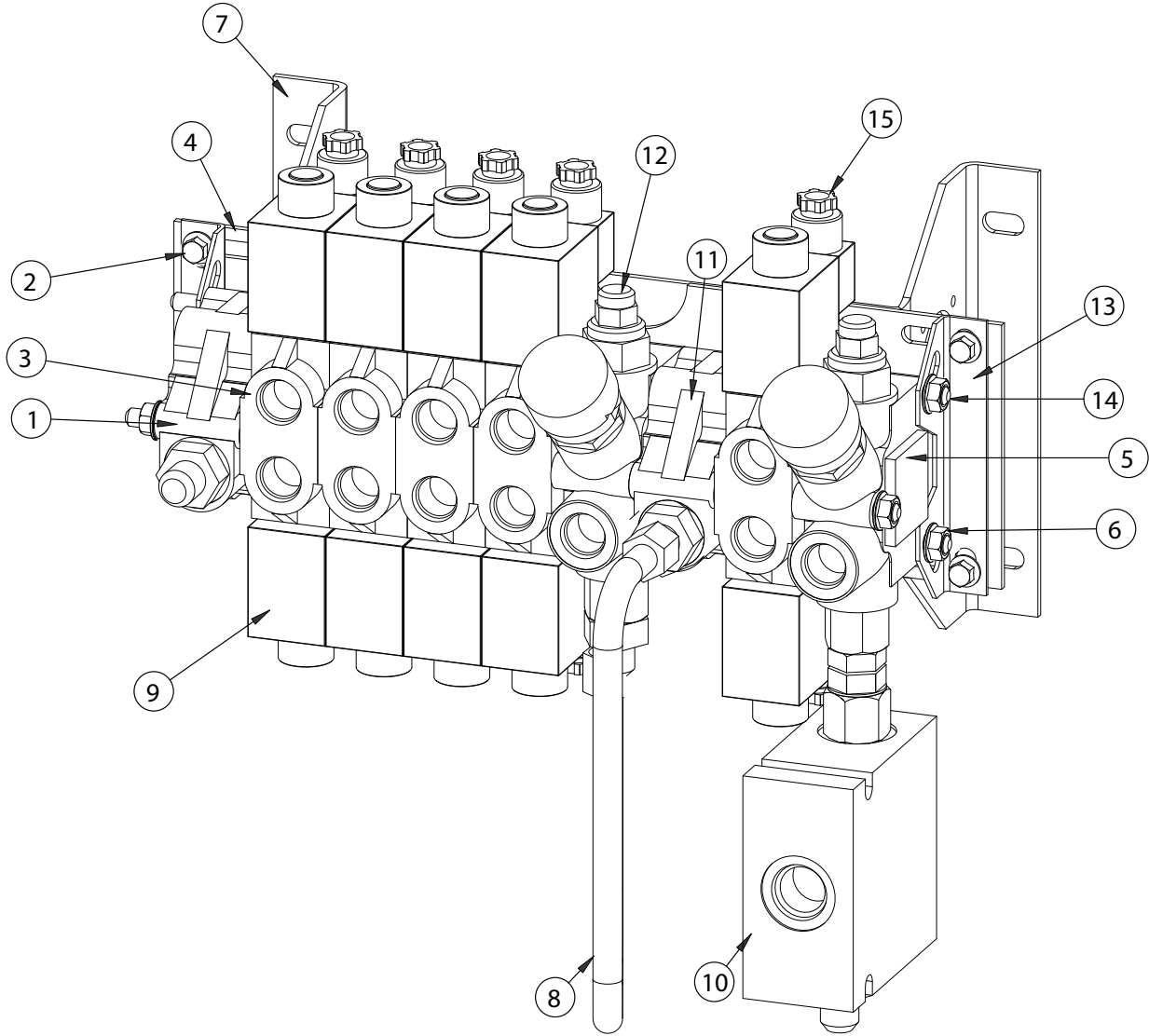
Ref.	Description	440 p/n	420 p/n
1	Roller, Main Conveyor	13211	13211
2	Insert, Rear Roller	13212	13212
3	Bearing	13255	13255
4	Coupler, Drive Roller	10036	10036
5	Cup, Bearing Mount	13887	13887
6	Chain, Coupler	10035	10035
7	Guard, Coupler	10037	10037
8	Plate, Bearing Mount	15708	15708
9	Insert, Roller Rear Drive	15478	15478
10	Screw, Flat-Head	SS1C0516	SS1C0516
11	Magnetic Wheel Assembly	14216	14216
12	Screw, Flange Head	45C0620	45C0620
13	Cover, Bearing Cup	13706	13706
14	Screw, Brass	14097	14097
15	Plate, Bearing Mount	15707	15707
16	Key	16627	16627
17	Screw, Set	15G0608	15G0608
18	Insert, Front Roller	13213	13213
19	Insert, Front Roller	13215	13215
20	Bearing Assembly	13035	13035
21	Grease Fitting	10H25	10H25
22	Washer	SS25E15	SS25E15
23	Key	7J3100	7J3100

# MAIN CONVEYOR 440, 420



Ref.	Description	440 p/n	420 p/n
	Assembly	10992	10265
1	Panel, Conveyor Floor	10988	10027
2	Strip, Rub	10989	10235
3	Strip, Rub	10990	10028
4	Strip, Rub	10991	10029
5	Rivnut	16724	16724
6	Rivet	10289	10289

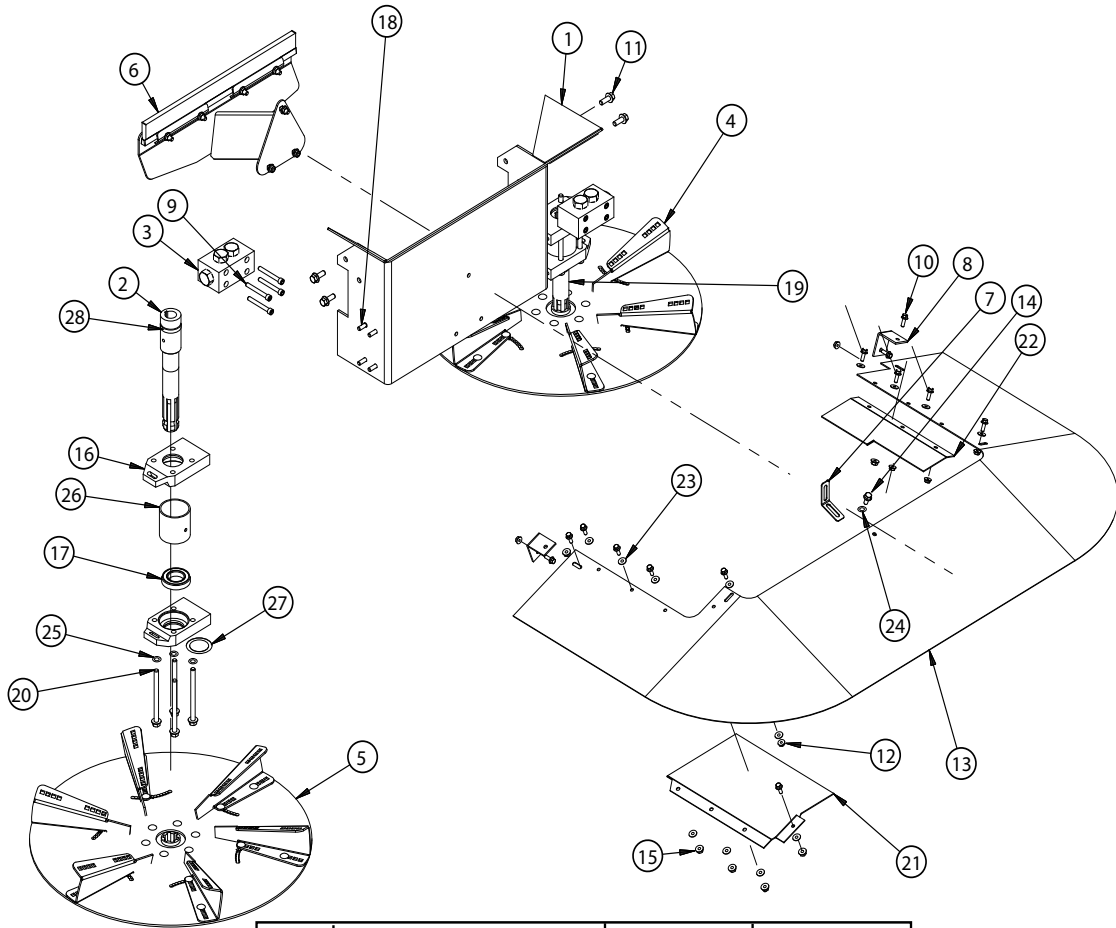
# VALVE ASSEMBLY 440, 420



Ref.	Description	440 p/n	420 p/n
	Complete Assembly	16125	16125
1	Valve, Outlet	10910	10910
2	Screw, Flange Head	35C0412	35C0412
3	Valve, Center Section	10908	10908
4	Plate, Extension	11140	11140
5	Valve, Inlet	10909	10909
6	Nut, Hex Flange	89D04	89D04
7	Mount	11141	11141
8	Hydraulic Tube Assembly	11454	11454
9	Coil	13019	13019
10	Valve, Flow Regulator	13729	13729
11	Valve, Middle Outlet	15124	15124
12	Valve, Middle Inlet	15447	15447
13	Bracket	11138	11138
14	Threaded Rod	16170	16170
15	Din Plug	11188	11188
	Valve Kit*	12198	12198

\* Services one valve section

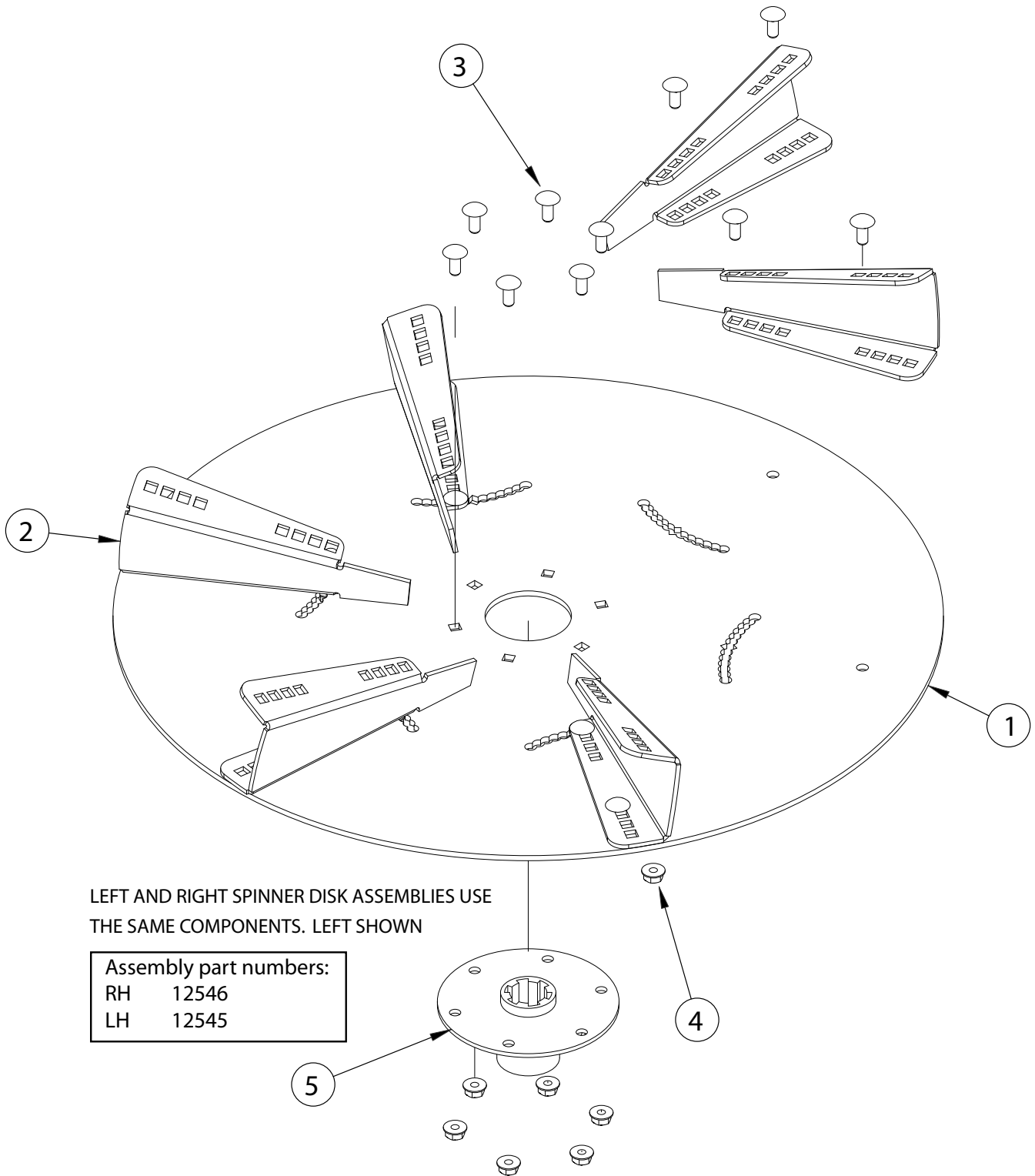
# SPINNER ASSEMBLY 440, 420



Complete Assembly  
p/n 13804

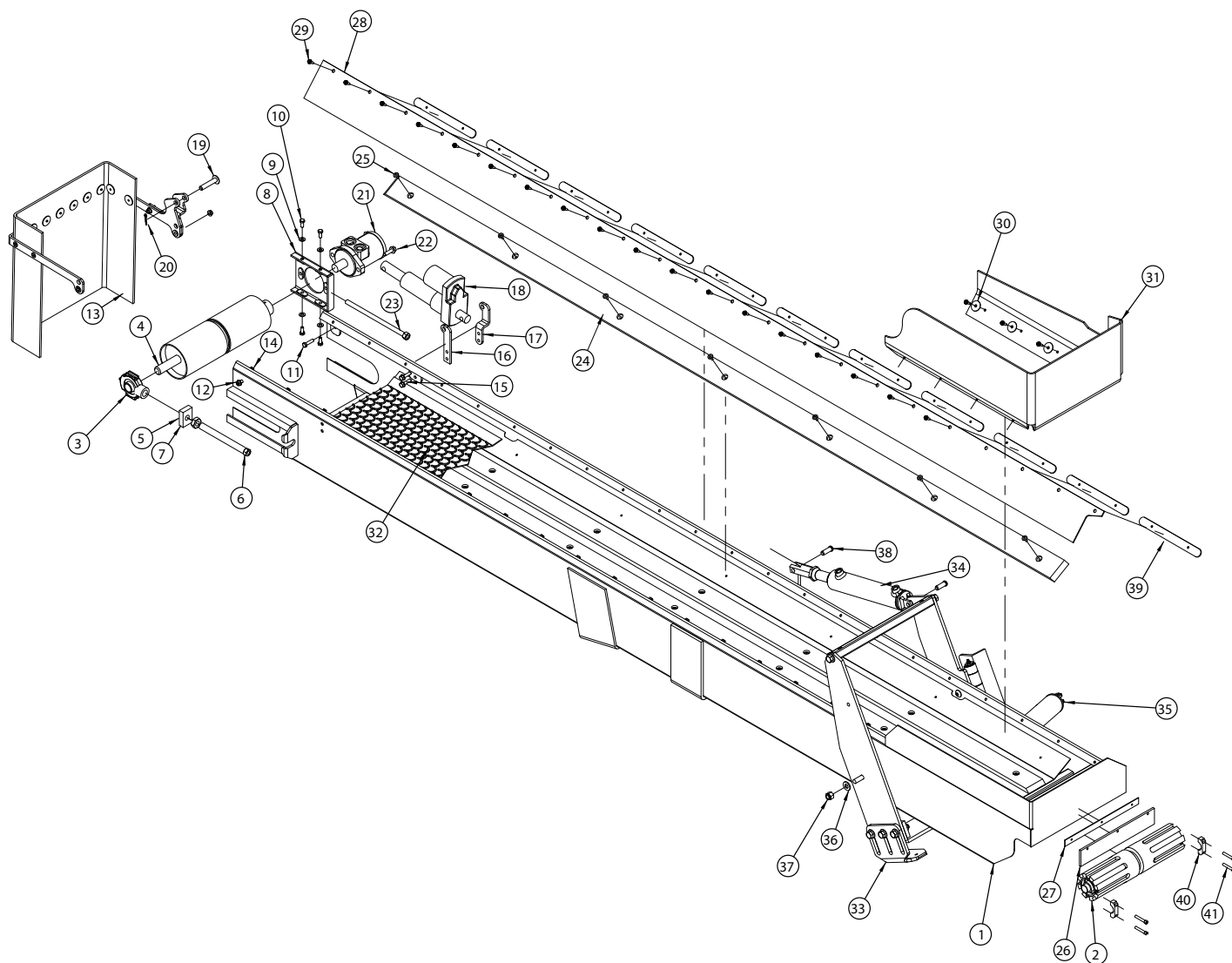
Ref.	Description	440 p/n	420 p/n
1	Spinner Chute	13802	13802
2	Spinner Shaft	10020	10020
3	Bypass Valve	10019	10019
4	Assy, Disk White RH	12546	12546
5	Assy, Disk White LH	12545	12545
6	Assy, Brush	11645	11645
7	Brace, Spinner Shield	12194	12194
8	Shield Mount	10379	10379
9	Screw, Socket Head	SS73G0540	SS73G0540
10	Screw, Flange Head	SS1C0412	SS1C0412
11	Screw, Flange Head	35C0616	35C0616
12	Nut, Flange Head	SS59D04	SS59D04
13	Spinner Shield	14100	14100
14	Screw, Flange Head	SS1C0512	SS1C0512
15	Nut, Flange Head	SS59D05	SS59D05
16	Holder, Spinner Motor	13251	13251
17	Bearing	13255	13255
18	Screw, Flange Head	SS1C0516	SS1C0516
19	Tube, Spinner Bearing	13256	13256
20	Screw, Flange Head	17C0680	17C0680
21	Plate, Filler Shield LH	14101	14101
22	Plate, Filler Shield RH	10361	10361
23	Washer	SS25E13	SS25E13
24	Washer	SS25E15	SS25E15
25	Lock Washer	6E06	6E06
26	Tube, Spinner Bearing	16594	16594
27	Seal	18119	18119
28	Magnet	11584	11584

# SPINNER 440, 420



Ref.	Description	440 p/n	420 p/n
1	Spinner Disk	12543	12543
2	Blade, Spinner	12539	12539
3	Bolt, Carriage	10C0512	10C0512
4	Nut, Flange Head	55D05	55D05
5	Hub	13954	13954

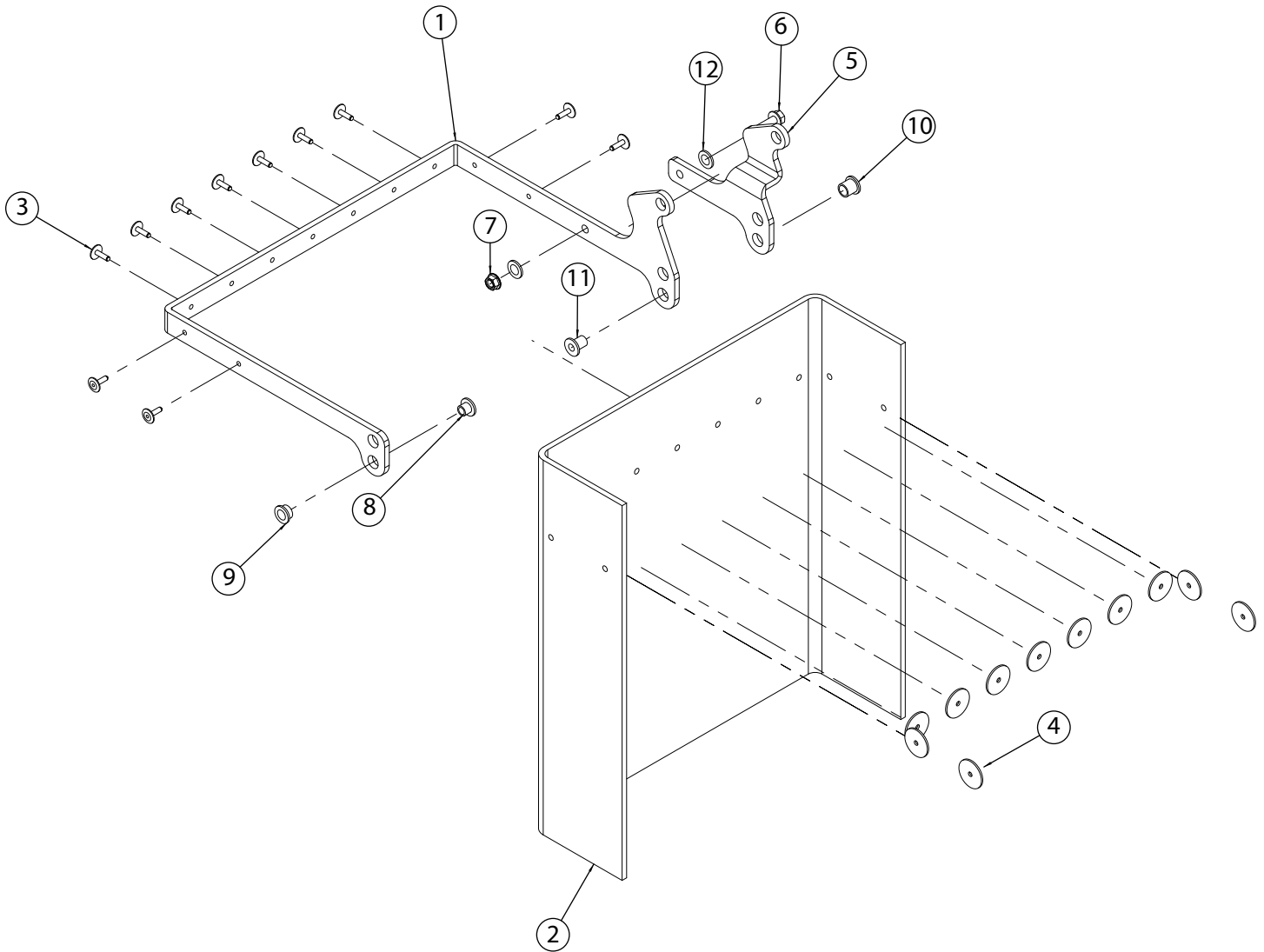
# SIDE CONVEYOR ASSEMBLY 440, 420



Ref.	Description	440 p/n	420 p/n
	Assembly	17154	16269
1	Side Conveyor	15455	15443
2	Tail Roller Assembly	10787	10787
3	Take Up Bearing Assy	13035	13035
4	Drive Roller	13360	13360
5	Belt Adjuster Nut	10015	10015
6	Adjustment Screw	11277	11277
7	Jam Nut	10212	10212
8	Motor Mount	10791	10791
9	Washer	SS25E15	SS25E15
10	Screw	SS1C0512	SS1C0512
11	Screw	SS1C0520	SS1C0520
12	Screw	SS1C0516	SS1C0516
13	Chute	13974	13974
14	Nut	89D05	89D05
15	Screw	SS1C0520	SS1C0520
16	Motor Mount	14143	14143
17	Motor Mount	14292	14292
18	Actuator, Electric	14156	14156
19	Clevis Pin	15466	15466
20	Cotter Pin	SSC0TP	SSC0TP
21	Motor, Hydraulic	10668	10668

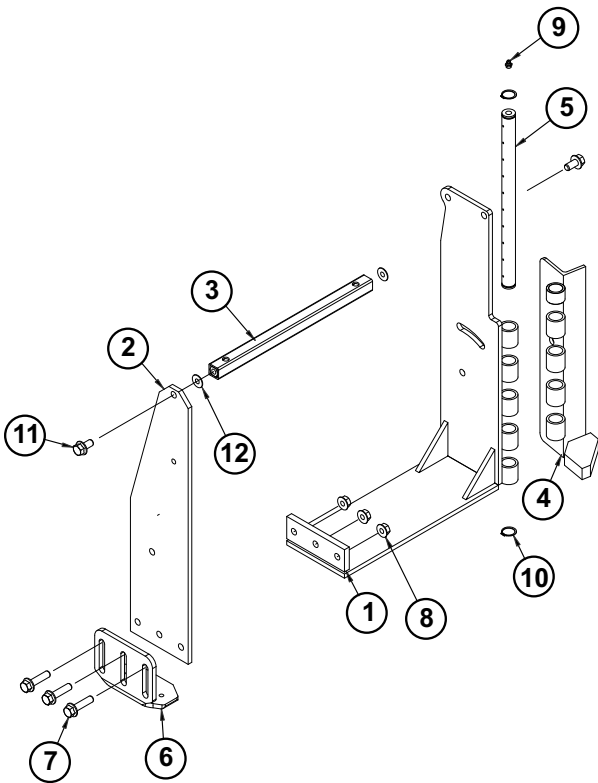
Ref.	Description	440 p/n	420 p/n
22	Screw	SS1C0620	SS1C0620
23	Adjustment Screw	11277	11277
24	Belt Support	14103	14159
25	Rivet	10289	10289
26	Seal, Side Conveyor	14335	14335
27	Seal Retainer	N/A	N/A
28	Wiper	15460	15449
29	Screw	SS84G2512	SS84G2512
30	Fender Washer	14792	14792
31	Hopper Extension	15448	15448
32	Belt	14155	14154
33	Side Conveyor Mount	10798	10798
34	Cylinder - Up-Down	10793	10793
	Seal Kit	12126	12126
35	Cylinder - Swing	11775	11775
	Seal Kit	12126	12126
36	Washer	SS25E21	SS25E21
37	Nut, Nylock	89D08	89D08
38	Clevis Pin	2F8127	2F8127
39	Wiper Backer	14787	14787
40	Clamp, Roller	12059	12059
41	Allen-Head Cap Screw	73G042	73G042

# SIDE CONVEYOR CHUTE 440, 420



Ref.	Description	440 p/n	420 p/n
1	Strap, Chute	14007	14007
2	Sheet, Rubber	14152	14152
3	Rivet	10289	10289
4	Washer	10381	10381
5	Bracket, Motor Mount	14293	14293
6	Screw, Flange Head	SS1C0516	SS1C0516
7	Nut	SS59D05	SS59D05
8	Bushing, Inner	14328	14328
9	Bushing, Outer	14329	14329
10	Bushing, Outer	14330	14330
11	Bushing, Inner	14188	14188
12	Washer	SS25E15	SS25E15

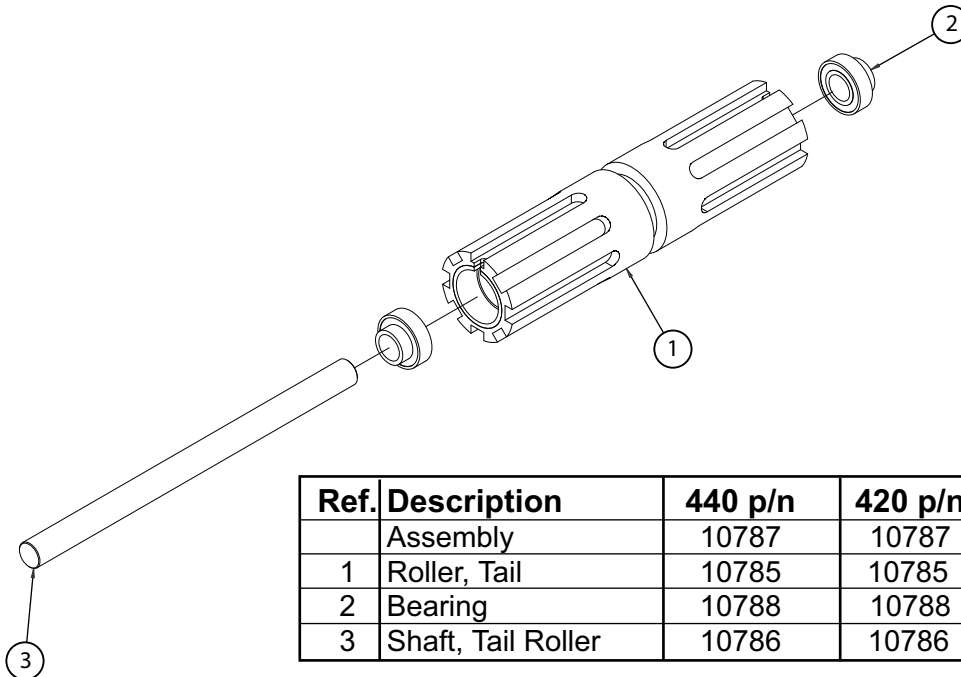
## SIDE CONVEYOR SADDLE 440, 420



Ref.	Description	440 p/n	420 p/n
1	Hinge Assembly*	20373	20373
2	Side Plate	10799	10799
3	Crossmember	10802	10802
4	Hinge	N/A	N/A
5	Hinge Pin	N/A	N/A
6	Adjustable Shoe Angle	11721	11721
7	Screw, Flange Head	35C0832	35C0832
8	Nut, Flange Head	89D08	89D08
9	Grease Fitting	N/A	N/A
10	Snap Ring, External	N/A	N/A
11	Screw, Flange Head	35C0816	35C0816
12	Washer	25E22	25E22

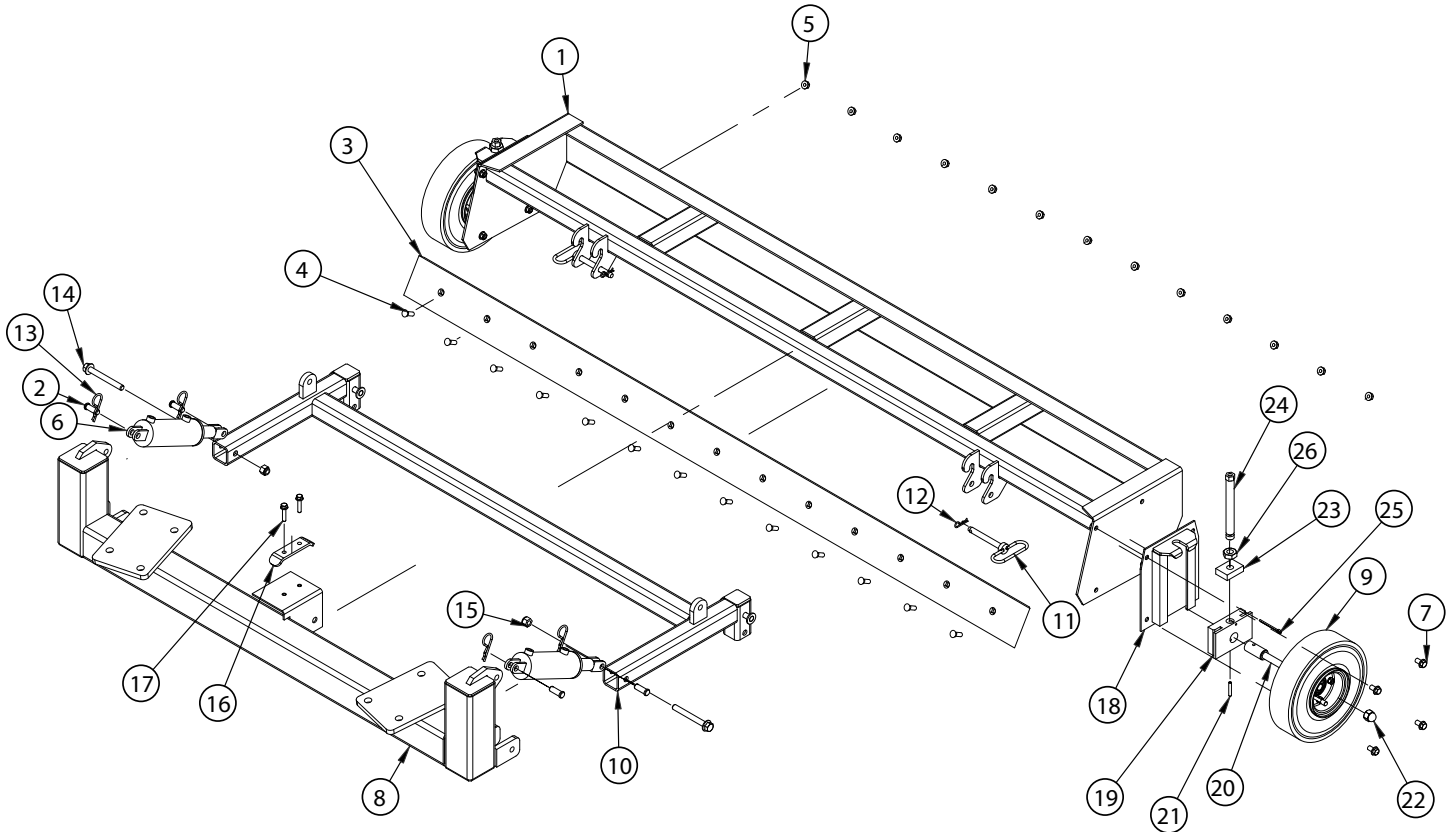
\* Only available as an assembly. Includes item numbers 4, 5, 9 and 10

## SIDE CONVEYOR TAIL ROLLER 440, 420



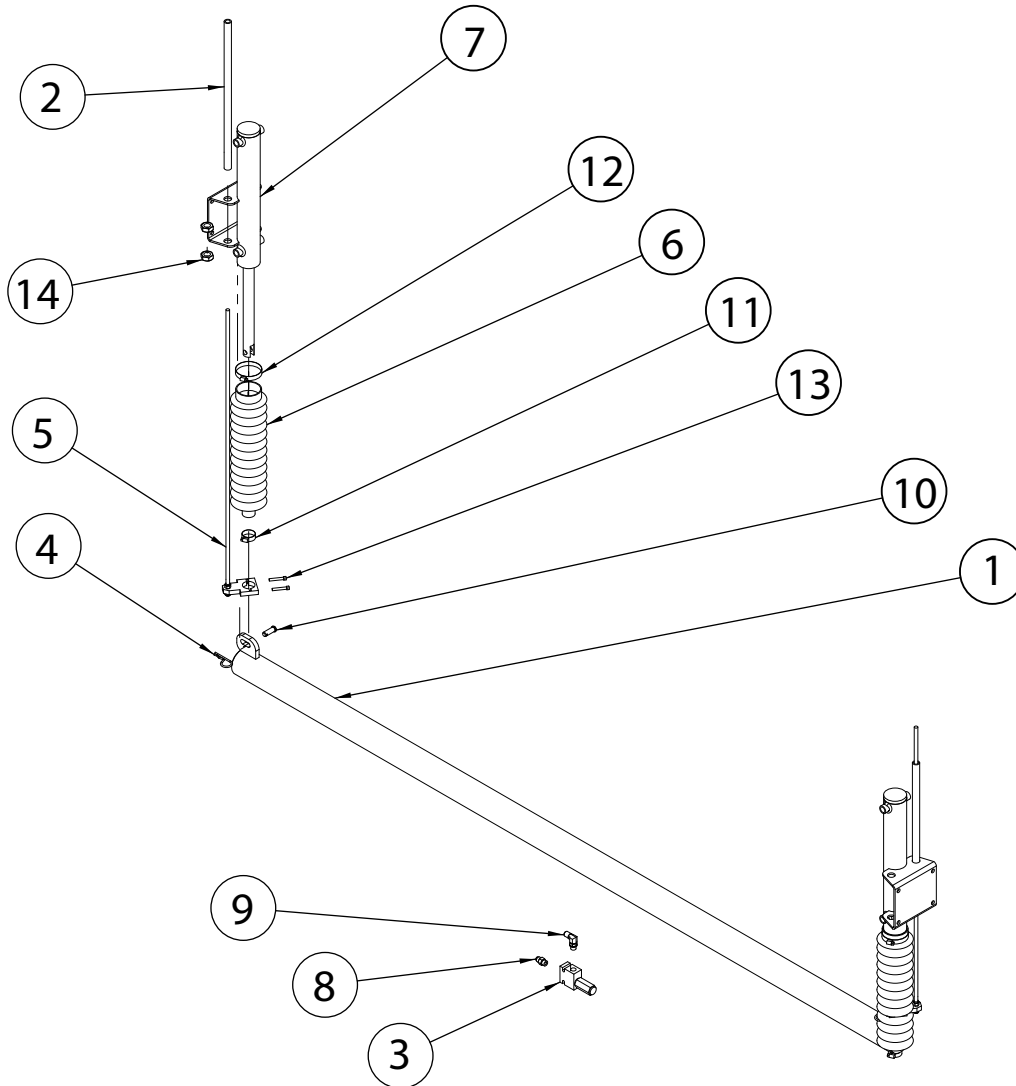
Ref.	Description	440 p/n	420 p/n
	Assembly	10787	10787
1	Roller, Tail	10785	10785
2	Bearing	10788	10788
3	Shaft, Tail Roller	10786	10786

# BOX SCRAPER 440, 420



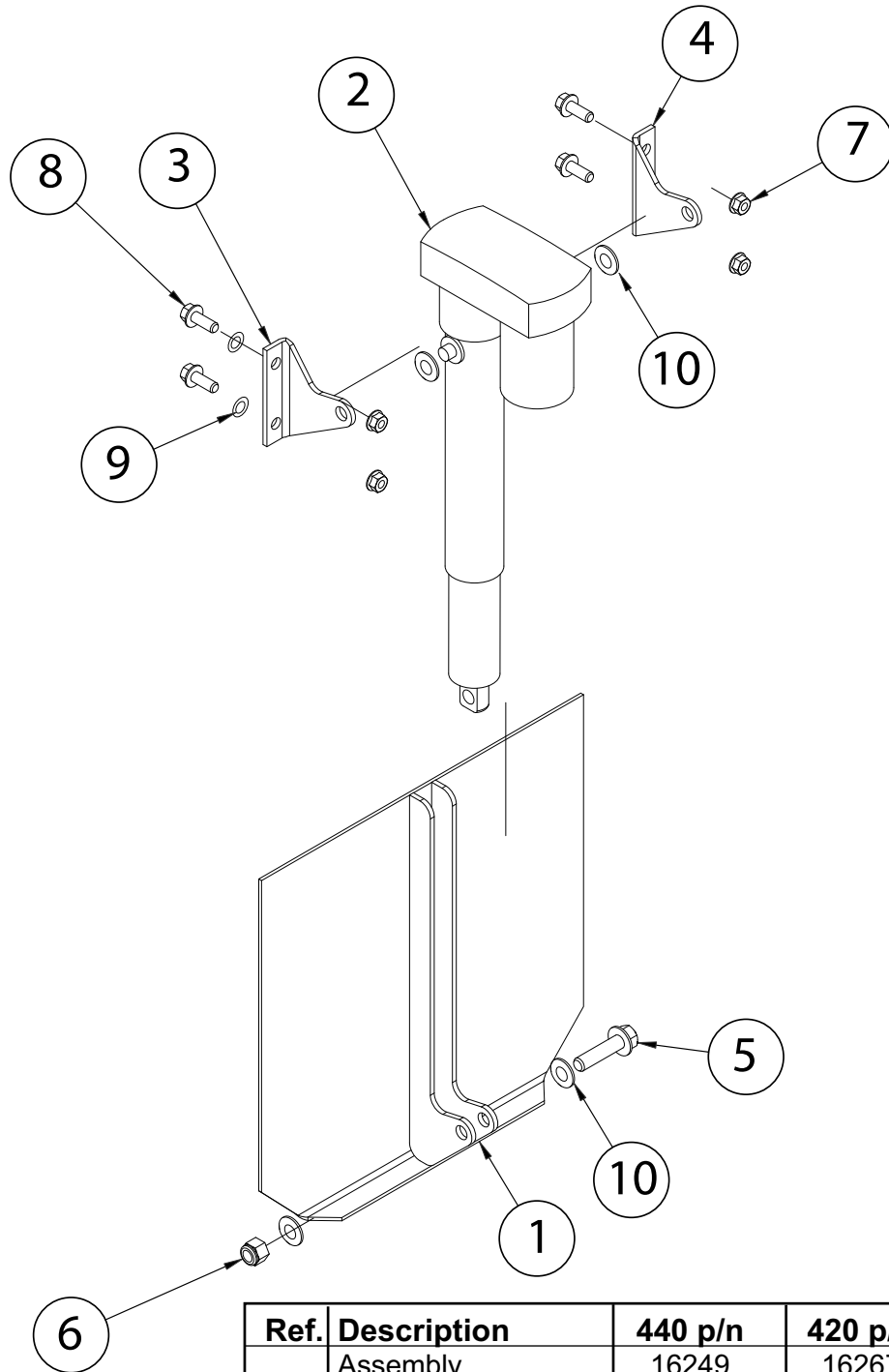
Ref.	Description	440 p/n	420 p/n
	Assembly	12500	14994
1	Box	12498	12498
2	Clevis Pin	2F8127	2F8127
3	Blade	11651	11651
4	Plow Bolt	39C0620	39C0620
5	Nut, Flange Head	89D06	89D06
6	Cylinder	10986	10986
7	Bolt, Flange Head	35C0612	35C0612
8	Hanger	10954	14988
9	Wheel And Tire Assy	12197	12197
10	Swing Support	10955	10955
11	Pin	10984	10984
12	Pin, Hitch Clip	10301	10301
13	Pin, Hitch Pin	13169	13169
14	Screw, Flange Head	SS1C0860	SS1C0860
15	Nut, Nylock	SS59D08	SS59D08
16	Plate, Clamp	10957	10957
17	Screw, Flange Head	35C0524	35C0524
18	Wheel Mount	11845	11845
19	Block, Spindle Mount	10981	10981
20	Spindle	10980	10980
21	Pin, Straight	1JM6040	1JM6040
22	Nut, Capped	47D10	47D10
23	Nut	10015	10015
24	Adjuster Screw	10978	10978
25	Cotter Pin	1F0628	1F0628
26	Jam Nut	7D12	7D12

# DEBRIDGER 440



Ref.	Description	440 p/n
	Load Breaker Assy.	16248
1	Debridger Tube	11002
2	Indicator Guide	11011
3	Relief Valve	11068
4	Hitch Pin	13169
5	Indicator Rod	16521
6	Bellows	16522
7	Cylinder	16523
8	Adapter	21576
9	Elbow Fitting-90°	21599
10	Clevis Pin	2F8127
11	Hose Clamp	44H20
12	Hose Clamp	44H40
13	Bolt - Allen Head	73G0424
14	Jam Nut	8D12

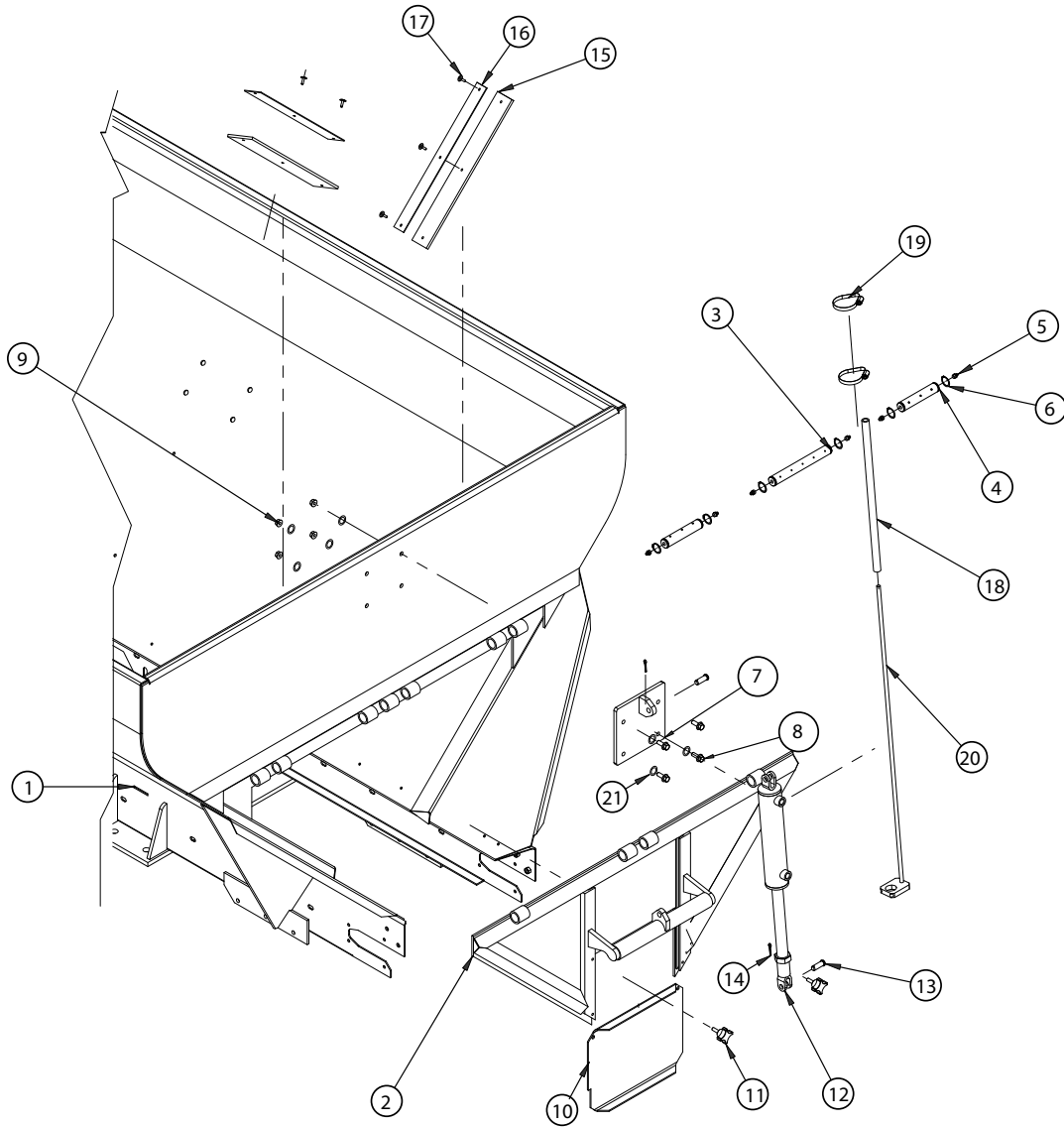
# ELECTRIC FRONT DOOR 440, 420



Ref.	Description	440 p/n	420 p/n
	Assembly	16249	16267
1	Control Door	11027	11027
2	Actuator	11393	11393
3	Bracket, Mount - RH	11289	11433
4	Bracket, Mount - LH	11288	11432
5	Screw, Flange Head	SS1C0832	SS1C0832
6	Nut, Nylock	SS59D08	SS59D08
7	Nut, Flanged	SS59D06	SS59D06
8	Screw, Flange Head	SS1C0620	SS1C0620
9	Washer	SS25E17	SS25E17
10	Washer	SS25E21	SS25E21
*	Electric Harness	12087	12087

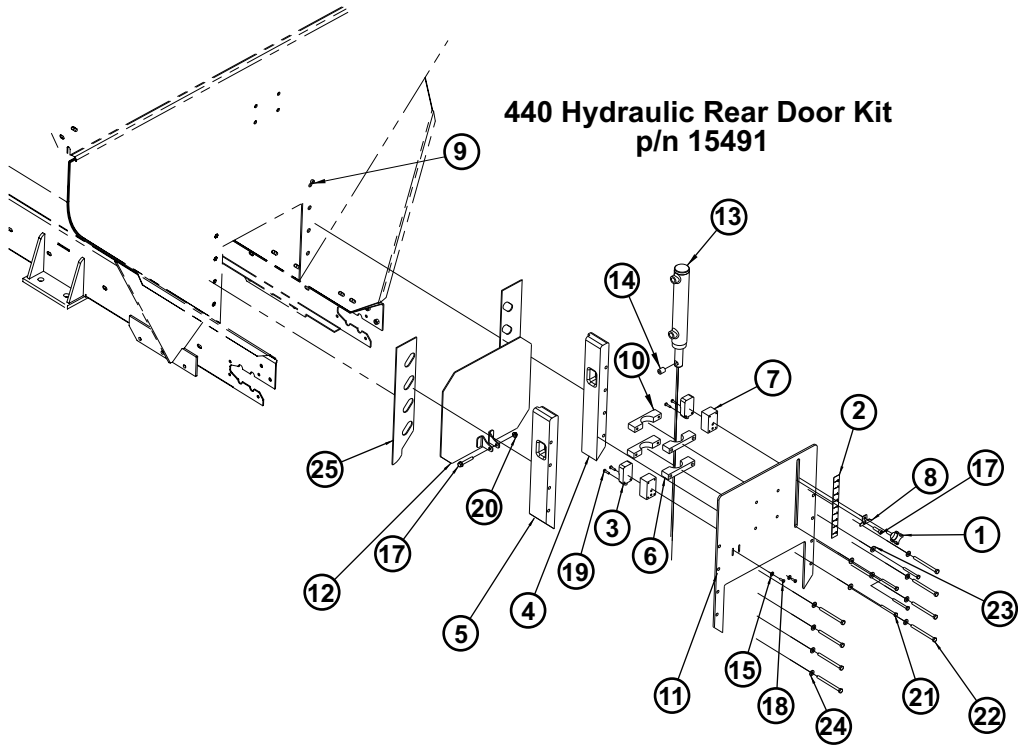
\* not illustrated

# OPTIONAL DUMP DOOR 440, 420



Ref.	Description	440 p/n	420 p/n
	Assembly	14325	14340
1	Hopper W/Dump Door	14322	14323
2	Dump Door	13833	11695
3	Hinge Pin	11020	11020
4	Hinge Pin	11021	11020
5	Grease Fitting	10H25	10H25
6	Snap Ring	5JM26	5JM26
7	Cylinder Mount	10995	10995
8	Screw, Flange Head	SS1C0620	SS1C0620
9	Nut	SS59D06	SS59D06
10	Panel, Rear Flow Door	11477	11477
11	Lock Knob	10012	10012
12	Cylinder, Dump Door	11775	11664
13	Pin, Clevis	2F8127	2F8127
14	Pin, Cotter	1F416	1F416
15	Seal, Dump Door	11040	12325
16	Strip, Seal Retainer	14327	12324
17	Rivet	10289	10289
18	Tube, Guide	11011	11011
19	Clamp	44H48	44H48
20	Indicator	11012	12287
21	Washer	SS25E17	SS25E17

# OPTIONAL HYDRAULIC REAR DOOR 440

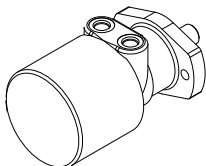


Ref.	p/n	Description
1	10012	Knob
2	10656	Scale Decal
3	14864	Sensor
4	15202	Track RH
5	15203	Track LH
6	15434	Non-Threaded Clamp
7	15462	Spacer
8	15463	Pointer Strip
9	15464	Bushing
10	15467	Threaded Clamp Half
11	15481	Plate
12	15483	Door

Ref.	p/n	Description
13	15492	Cylinder
14	15591	Bushing
15	25E10	Washer
16	35C0532	Flange Head Screw
17	73G0516	Socket Head Screw
18	87G1010	Pan Head Screw
19	87G1012	Pan Head Screw
20	89D05	Nut
21	SS1C0440	Cap Screw
22	SS1C0564	Cap Screw
23	SS25E14	Washer
24	SS25E15	Washer
25	13553	Plastic Spacer

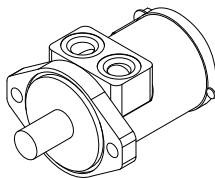
## ORBITAL MOTOR REFERENCE

440, 420, 414, 412, 411, 410  
Main Conveyor



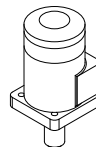
Item	p/n
Motor	10201
Seal Kit	20911

440/420  
Side Conveyor



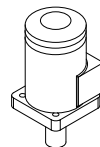
Item	p/n
Motor	10668
Seal Kit	18916

440, 414, 412  
Spinner Motor



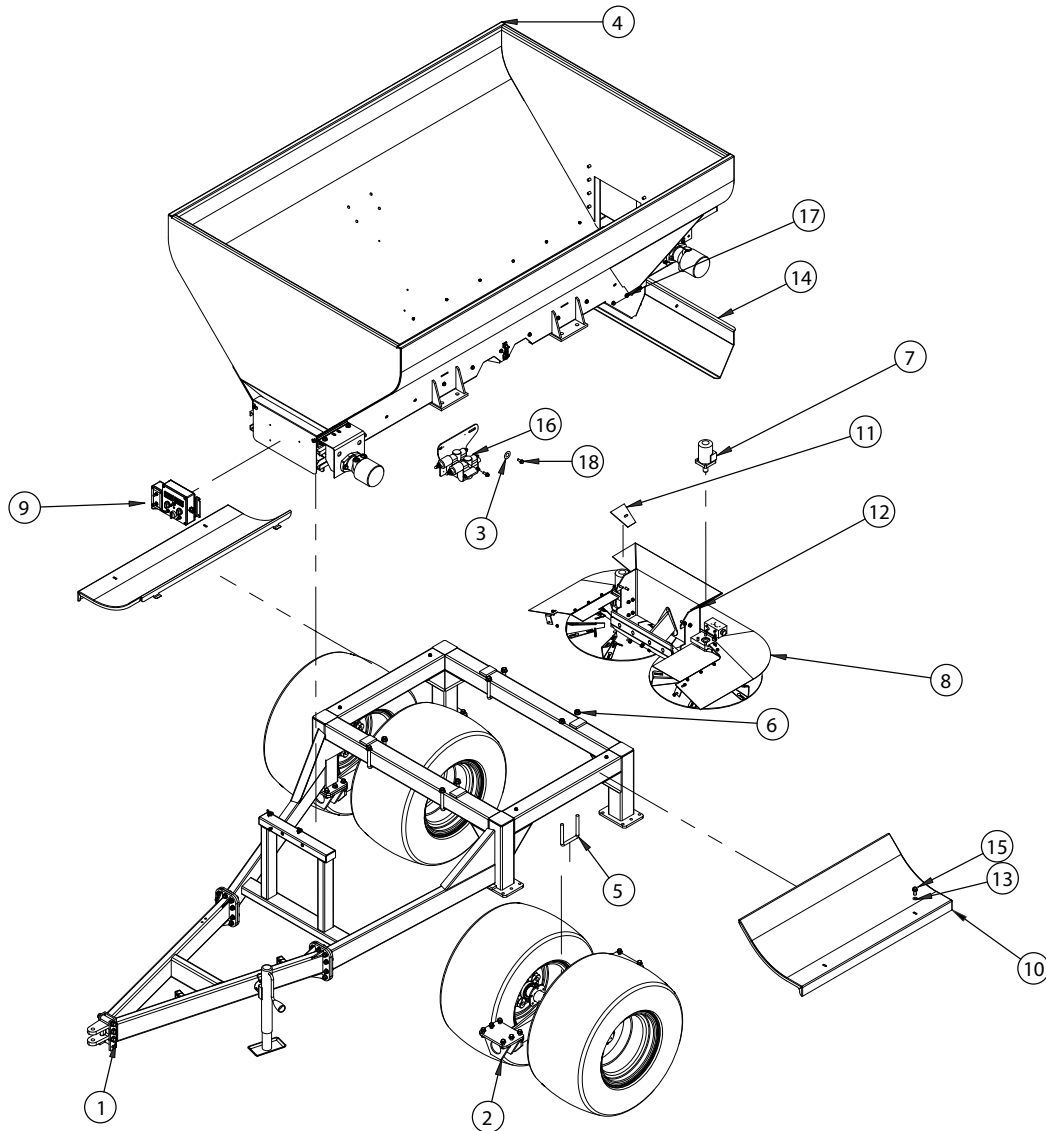
Item	p/n
Motor	11051
Seal Kit	12208

410, 411, 420  
Spinner Motor



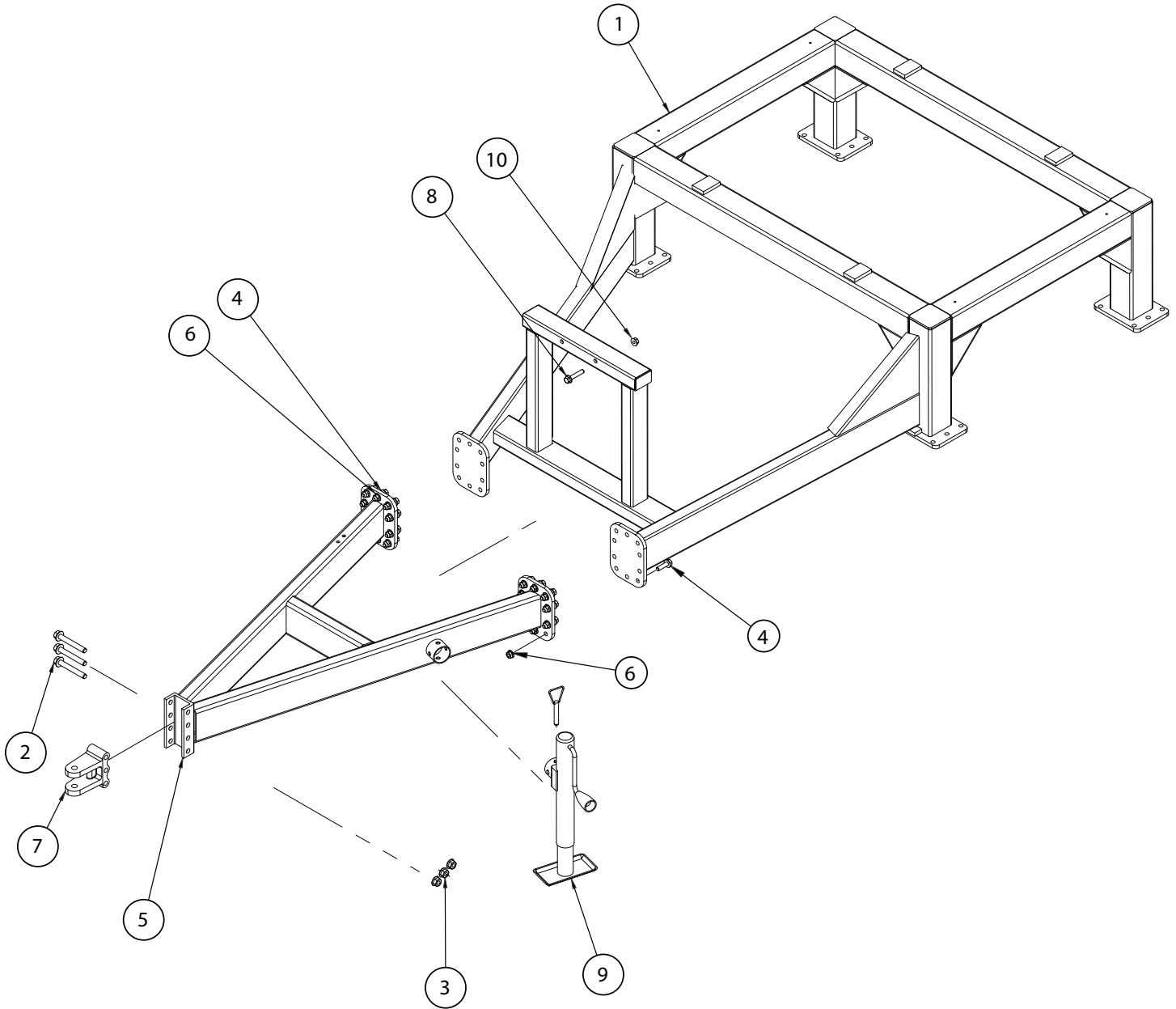
Item	p/n
Motor	10018
Seal Kit	12208

# FULL MACHINE 414, 412, 411



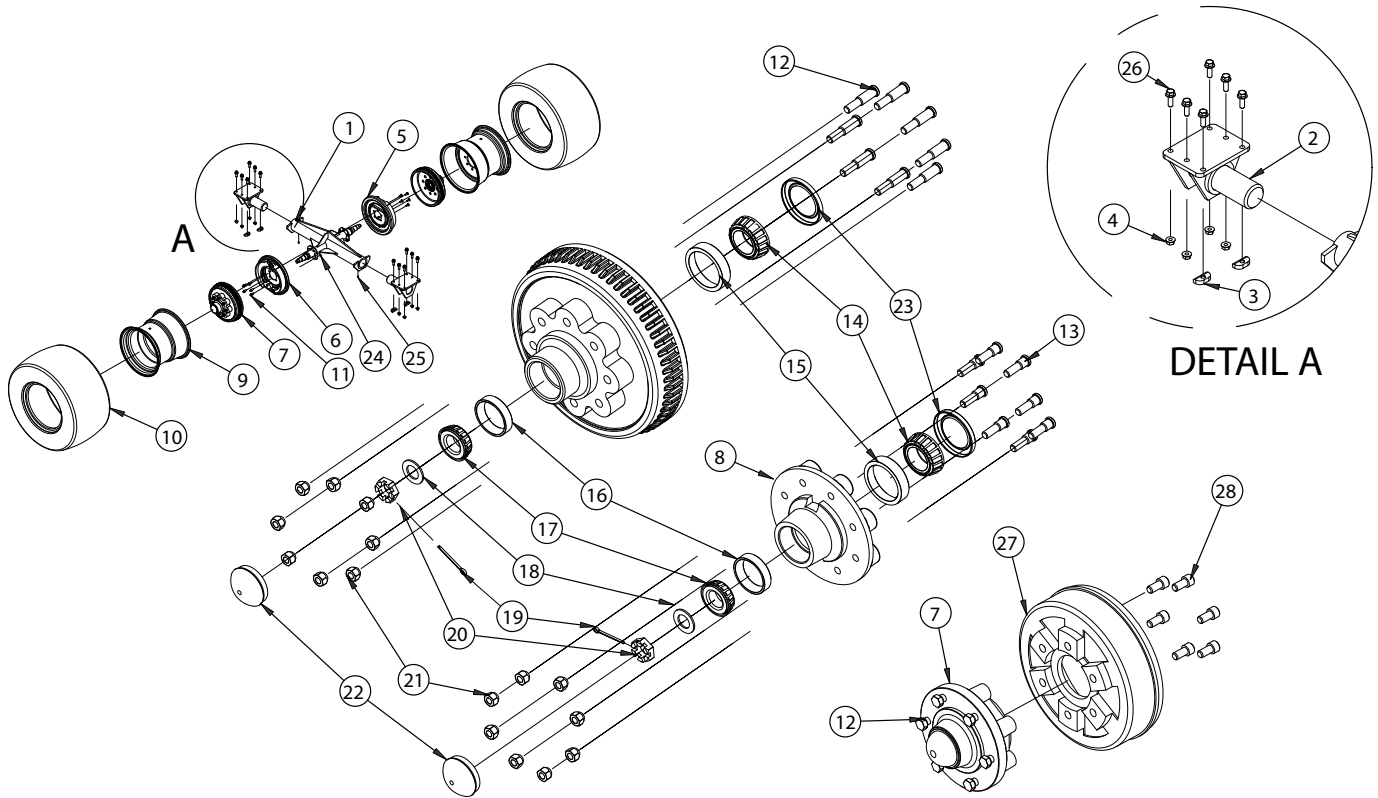
Ref.	Description	414 p/n	412 p/n	411 p/n
1	Frame Assy	See page 22	See page 22	See page 22
2	Axle Assy	See page 23	See page 23	See page 23
3	Washer	SS25E17	SS25E17	SS25E17
4	Hopper Assy	See page 24	See page 24	See page 24
5	U-Bolt	11889	12361	10189
6	Nut, Flange Head	83D10	83D08	83D08
7	Hydraulic Motor	11051	11051	10018
8	Spinner Assembly	See page 27	See page 27	See page 27
9	Control Box	See page 29	See page 29	See page 29
10	Fender	13870	14185	14185
11	Seal	10677	10677	10374
12	Screw, Thread Rolling	SS84G2510	SS84G2510	SS84G2510
13	Washer	SS25E15	SS25E15	SS25E15
14	Rear Shield	10936	10009	13115
15	Screw, Flange Head	SS1C0516	SS1C0516	SS1C0516
16	Valve Assy	14043	14043	14043
17	Screw, Flange Head	SS1C0616	SS1C0512	SS1C0512
18	Screw, Flange Head	SS1C0620	SS1C0620	SS1C0620

# FRAME ASSEMBLY 414, 412, 411



Ref.	Description	414 p/n	412 p/n	411 p/n
1	Main Frame	13581	13781	13891
2	Bolt, Flange Head	31C1072	31C1072	31C1072
3	Nut, Flanged	83D10	83D10	83D10
4	Screw, Flanged Head	31C0828	35C0624	35C0624
5	Tow Bar	10698	11407	11582
6	Nut, Flanged Head	83D08	83D06	83D06
7	Hitch, Clevis	12078	10004	10004
8	Bolt	31C0664	N/A	N/A
9	Jack, Side Swivel	10003	10003	10003
10	Nut, Flanged	83D06	83D08	83D08

# AXLE ASSEMBLY 414, 412, 411

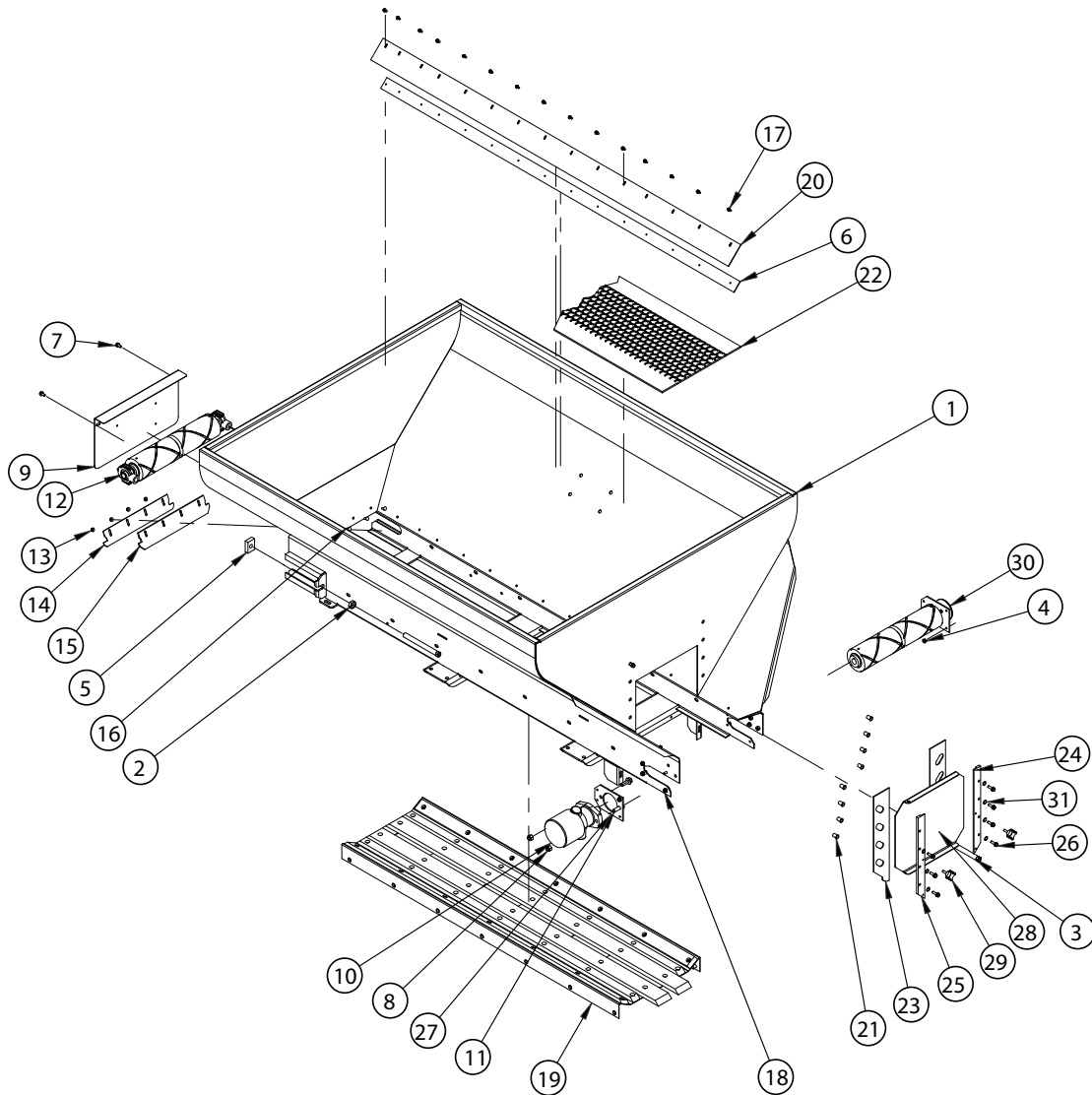


**412 & 411 BRAKE HUB AND DRUM**

Ref.	Description	414 p/n	412 p/n	411 p/n
1	Axle	13469	11417	11417
2	Axle Pivot	10685	11415	11415
3	Pivot Stop	10691	N/A	N/A
4	Nut, Flange Head	89D08	89D08	89D08
5	Right Side Brake Assy	11150	11420	N/A
6	Left Side Brake Assy	11149	11419	N/A
7*	Brake Hub Assy	13437	12335	N/A
8*	Idler Hub Assy	13434	10050	10050
9a	Wheel	13472	10051	10051
9b	Wheel 20" (Optional)	13473	N/A	N/A
10a	Tire	11538	10052	10052
10b	Tire 20" (Optional)	13473	N/A	N/A
11	Screw, Flange Head	31C0616	N/A	N/A
12	Stud, Brake Hub	13438	10209	N/A
13	Stud, Idler Hub	12202	10029	10029
14	Bearing, Inner	13427	10205	10205
15	Cup, Inner	13428	10203	10203
16	Cup, Outer	13426	10204	10204
17	Bearing, Outer	13425	10206	10206
18	Washer, Hardened	17109	27E14	27E14
19	Cotter Pin	1F532	1F528	1F528
20	Nut, Castellated	13429	4D14	4D14
21	Nut, Self Centering	12201	12201	12201
22	Hub, Grease Cap	13430	10207	10207
23	Grease Seal	13432	10208	10208
24	Nut, Flange Head	83D06	89D06	N/A
25	Grease Fitting	10H25	10H25	10H25
26	Screw, Flange Head	31C0828	31C0824	31C0824
27	Brake Drum	N/A	11416	N/A
28	Screw, Socket Head	N/A	74G0816	74G0816

\* Includes Bearings, Hub Cap, Seal, and Lug Nuts

# HOPPER ASSEMBLY 414, 412, 411

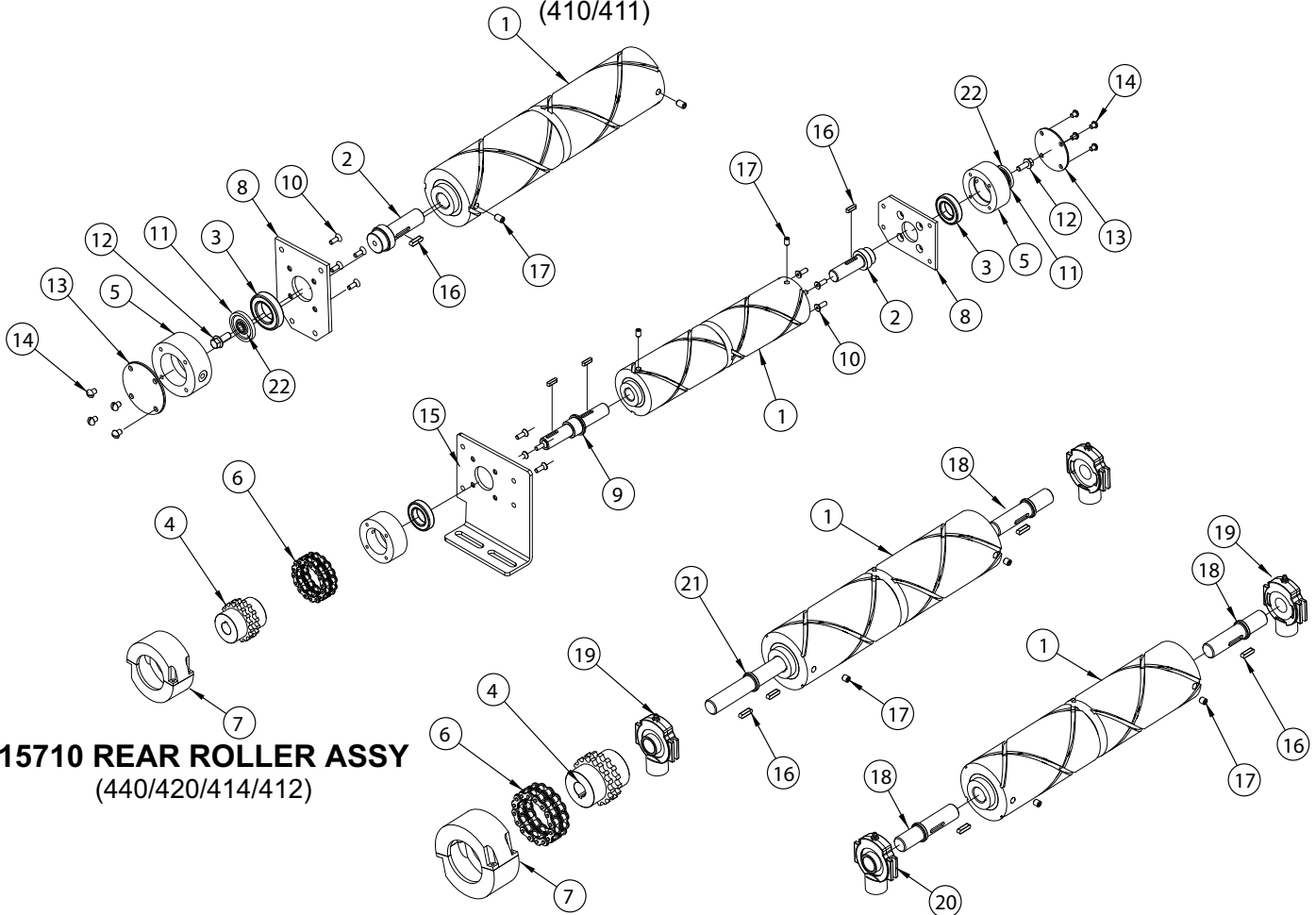


Ref.	Description	414 p/n	412 p/n	411 p/n	Ref.	Description	414 p/n	412 p/n	411 p/n
	Assembly	13945	13884	13893	16	Bolt, Carriage	SS37C0420	SS37C0420	SS37C0420
1	Hopper	16979	16980	16981	17	Screw	SS84G0416	SS84G0416	SS84G0416
2	Jam Nut	7D12	7D12	7D12	18	Screw, Flange Head	SS1C0516	SS1C0516	SS1C0516
3	Adjustment Screw	10016	10016	10016	19	Conveyor Pan Assy	13586	10876	10876
4	Nut	SS59D05	SS59D05	SS59D05	20	Wiper	13503	13535	13535
5	Nut, Belt Adjustment	10015	10015	10015	21	Rivnut	16724	16724	16724
6	Wiper Retainer	13504	13534	13534	22	Belt	13634	13587	13587
7	Screw, Flange Head	SS1C0616	SS1C0616	SS1C0616	23	Seal, Rear Door	13553	13553	13553
8	Nut, Nylock	SS59D08	SS59D08	SS59D08	24	Door Track RH	13367	13367	13367
9	Front Shield	16987	16987	16987	25	Door Track LH	13368	13368	13368
10	Conveyor Motor	10201	10201	10201	26	Screw, Flange Head	SS1C0520	SS1C0520	SS1C0520
11	Screw, Flange Head	SS1C0828	SS1C0828	SS1C0828	27	Plate, Motor Mount	13769	13769	13769
12	Front Roller Assy	10290	13414	13414	28	Panel, Door	12319	12319	12319
13	Nut, Flanged	SS59D04	SS59D04	SS59D04	29	Knob, Rear Door	10012	10012	10012
14	Seal, Backer Plate	16820	13478	13478	30	Roller Assy	15471	15471	13889
15	Seal, Front End	16819	13479	13479	31	Washer	SS25E15	SS25E15	SS25E15

# DRIVE ROLLERS 414, 412, 411

## 15709 REAR ROLLER ASSY

(410/411)



## 15710 REAR ROLLER ASSY (440/420/414/412)

## 10290 FRONT ROLLER ASSY (440/420/414)

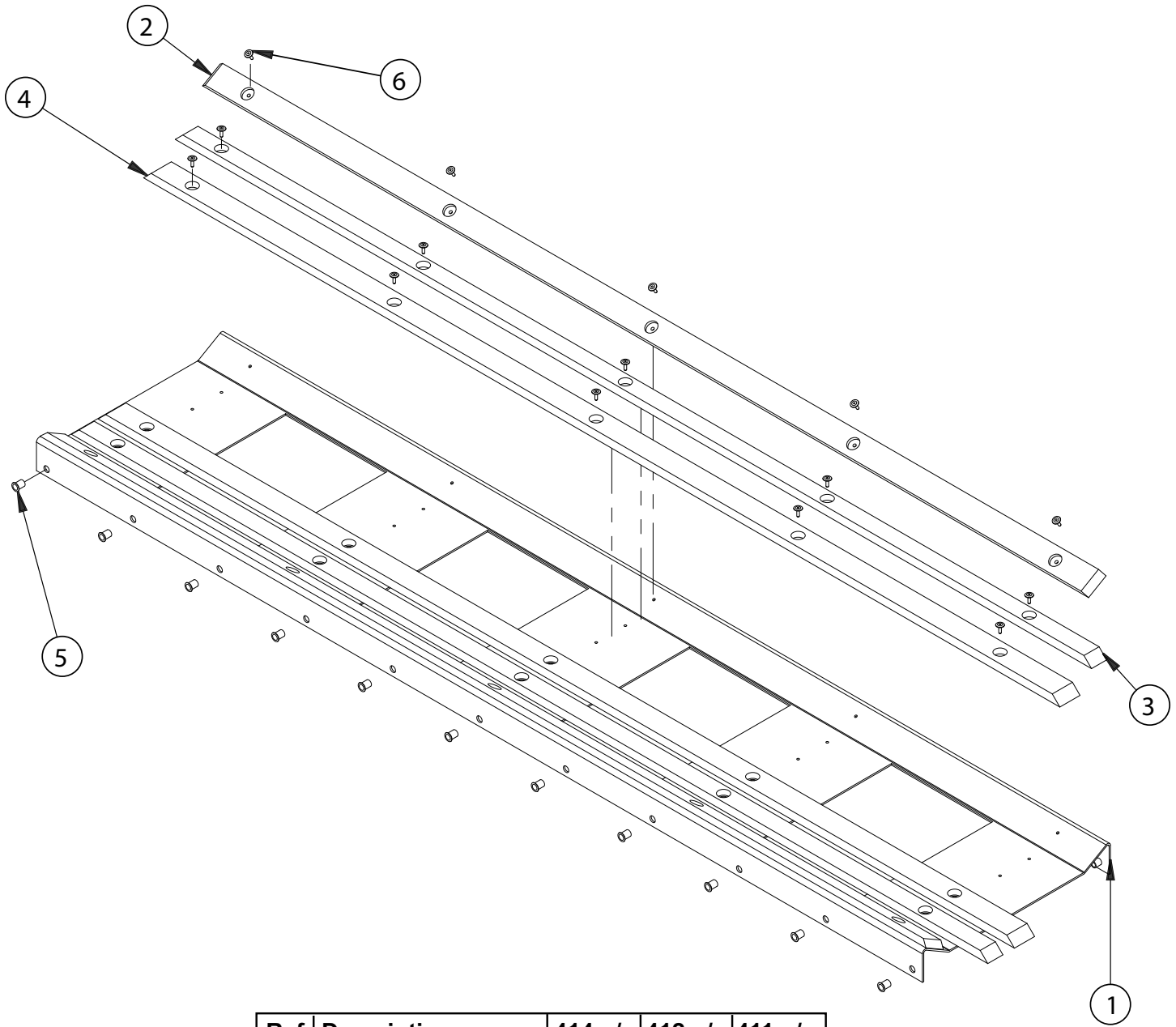
## 13414 FRONT ROLLER ASSY (412/411/410)

Ref.	Description	414 p/n	412 p/n	411 p/n
1	Roller, Main Conveyor	13211	13211	13211
2	Roller Insert	13212	13212	13212
3	Bearing	13255	13255	13255
4	Coupler, Drive Roller	10036	10036	N/A
5	Bearing Mount	13887	13887	13887
6	Chain Coupler	10035	10035	N/A
7	Guard	10037	10037	N/A
8	Plate, Bearing Mount	15708	15708	15708
9	Roller Insert	15478	15478	N/A
10	Screw, Countersunk	SS1C0516	SS1C0516	SS1C0516
11	Magnetic Wheel*	14216	14216	14216
12	Screw, Flange Head	35C0616	35C0616	35C0616
13	Cover	13706	13706	13706
14	Screw	14097	14097	14097
15	Plate, Bearing Mount	15707	15707	15707
16	Key	16627	16627	16627
17	Set Screw	15G0608	15G0608	15G0608
18	Roller Insert	13213	13213	13213
19	Grease Fitting	10H25	10H25	10H25
20	Bearing Assy	13035	13035	13035
21	Roller Insert	13215	N/A	N/A
22	Spacer**	15854	15854	15854

\* Electric Models Only

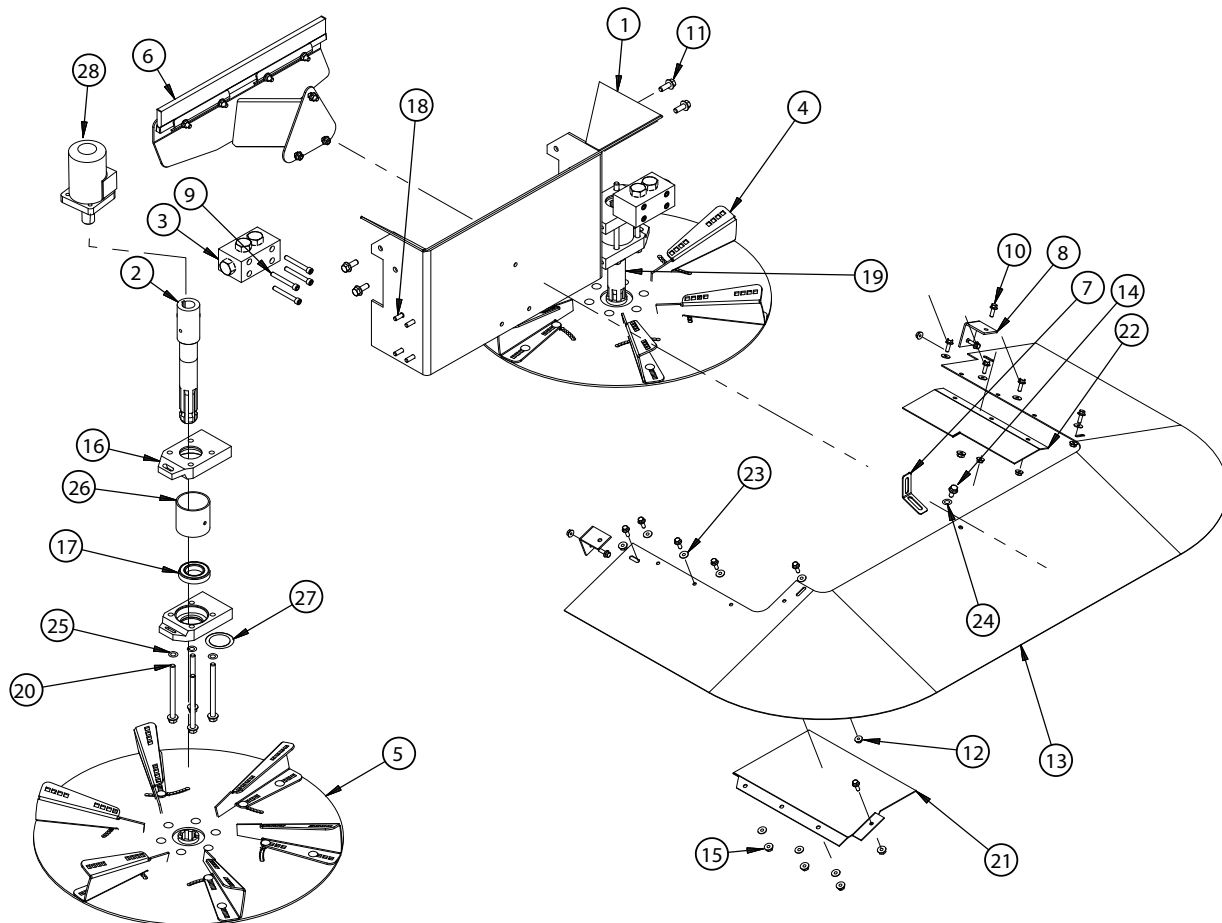
\*\* Manual Models Only

# CONVEYOR 414, 412, 411



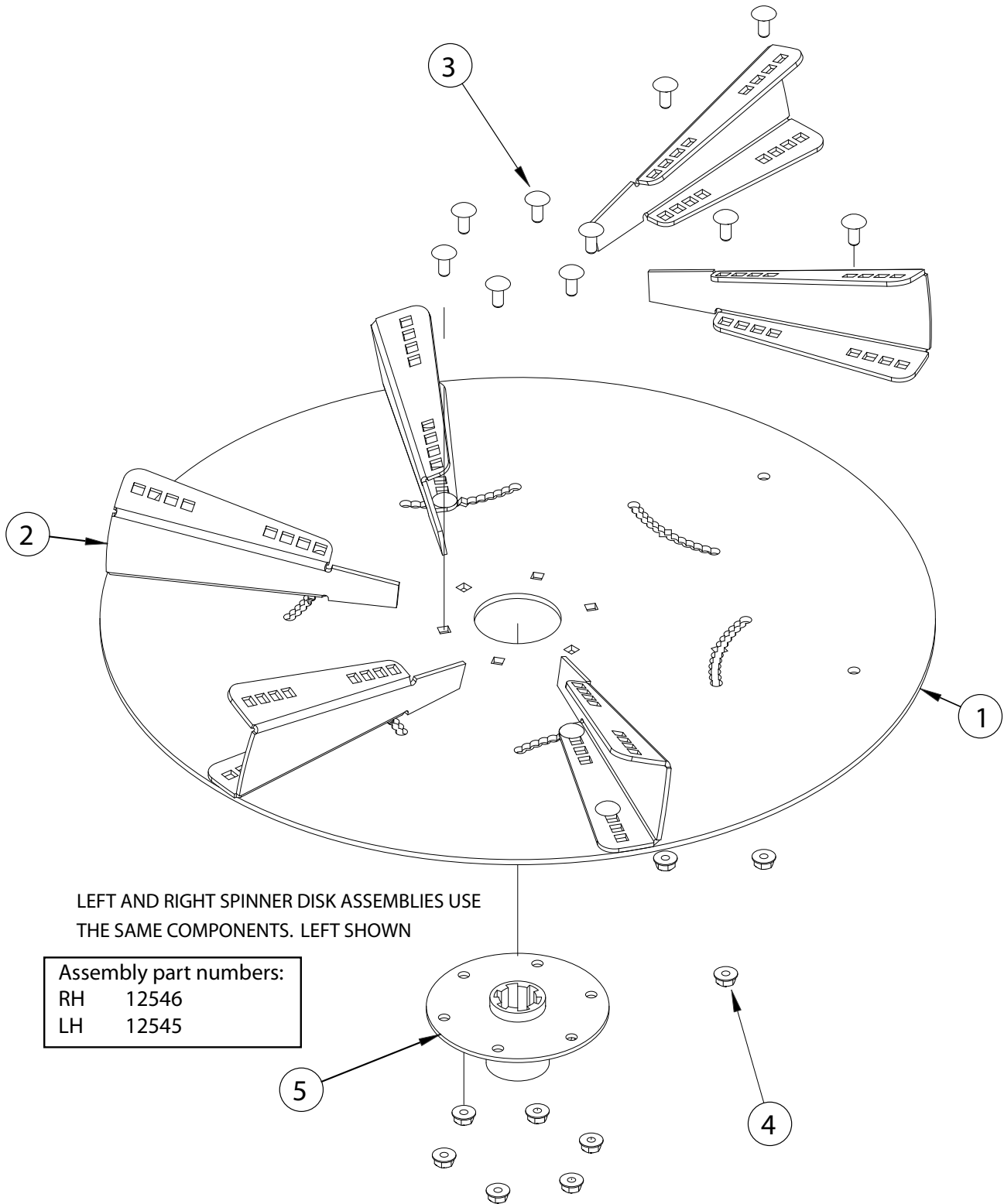
Ref.	Description	414 p/n	412 p/n	411 p/n
	Assembly	13586	10876	10876
1	Panel, Conveyor Floor	13582	10877	10877
2	Strip, Belt Support	13583	11610	11610
3	Strip, Belt Support	13584	10880	10880
4	Strip, Belt Support	13585	10879	10879
5	Rivnut	16724	16724	16724
6	Rivet	10289	10289	10289

# SPINNER ASSEMBLY 414, 412, 411



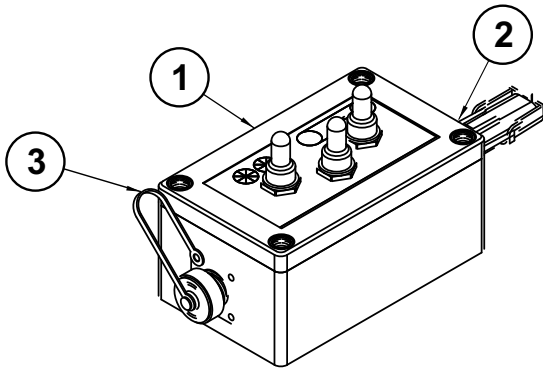
Ref.	Description	414 p/n	412 p/n	411 p/n
1	Spinner Chute	13802	13802	13802
2	Spinner Shaft	10020	10020	10020
3	Bypass Valve	10019	10019	10019
4	Assy, Disk White RH	12546	12546	12546
5	Assy, Disk White LH	12545	12545	12545
6	Assy, Brush	11645	11645	11645
7	Brace, Spinner Shield	12194	12194	12194
8	Shield Mount	10379	10379	10379
9	Screw, Socket Head	SS73G0540	SS73G0540	SS73G0540
10	Screw, Flange Head	SS1C0412	SS1C0412	SS1C0412
11	Screw, Flange Head	35C0616	35C0616	35C0616
12	Nut, Flange Head	SS59D04	SS59D04	SS59D04
13	Spinner Shield	14100	14100	14100
14	Screw, Flange Head	SS1C0512	SS1C0512	SS1C0512
15	Nut, Flange Head	SS59D05	SS59D05	SS59D05
16	Holder, Spinner Motor	13251	13251	13251
17	Bearing	13255	13255	13255
18	Screw, Flange Head	SS1C0516	SS1C0516	SS1C0516
19	Tube, Spinner Bearing	13256	13256	13256
20	Screw, Flange Head	17C0680	17C0680	17C0680
21	Plate, Filler Shield LH	14101	14101	14101
22	Plate, Filler Shield RH	10361	10361	10361
23	Washer	SS25E13	SS25E13	SS25E13
24	Washer	SS25E15	SS25E15	SS25E15
25	Lock Washer	6E06	6E06	6E06
26	Tube, Spinner Bearing	16594	16594	16594
27	Seal	18119	18119	18119
28	Spinner Motor	11051	11051	10018

# SPINNER 414, 412, 411



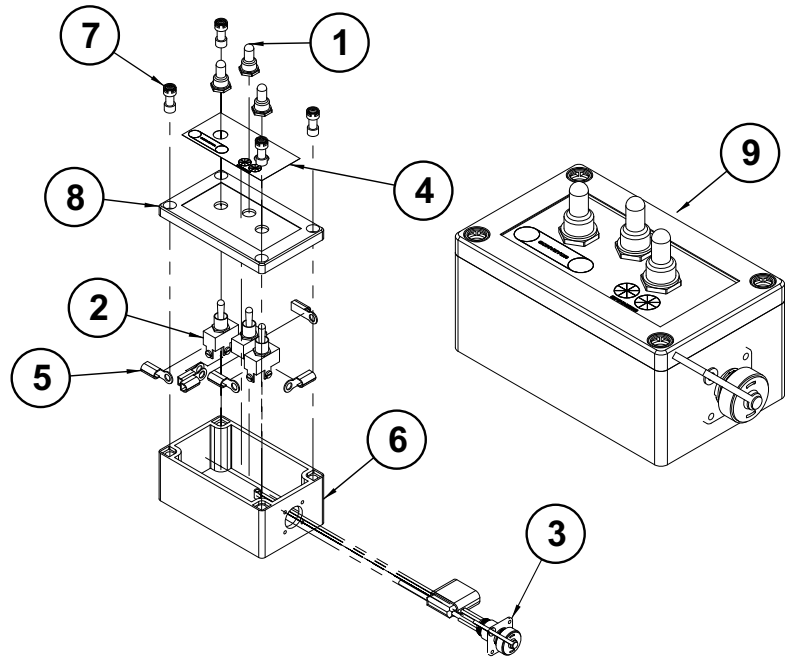
Ref.	Description	414 p/n	412 p/n	411 p/n
1	Spinner Disk	12543	12543	12543
2	Blade, Spinner	12539	12539	12539
	White Set	12608	12608	12608
	Green Set	12609	12609	12609
	Black Set	12610	12610	12610
3	Bolt, Carrage	10C0512	10C0512	10C0512
4	Nut, Flange Head	55D05	55D05	55D05
5	Hub	13954	13954	13954

# MANUAL CONTROL BOX 414, 412, 411, 410



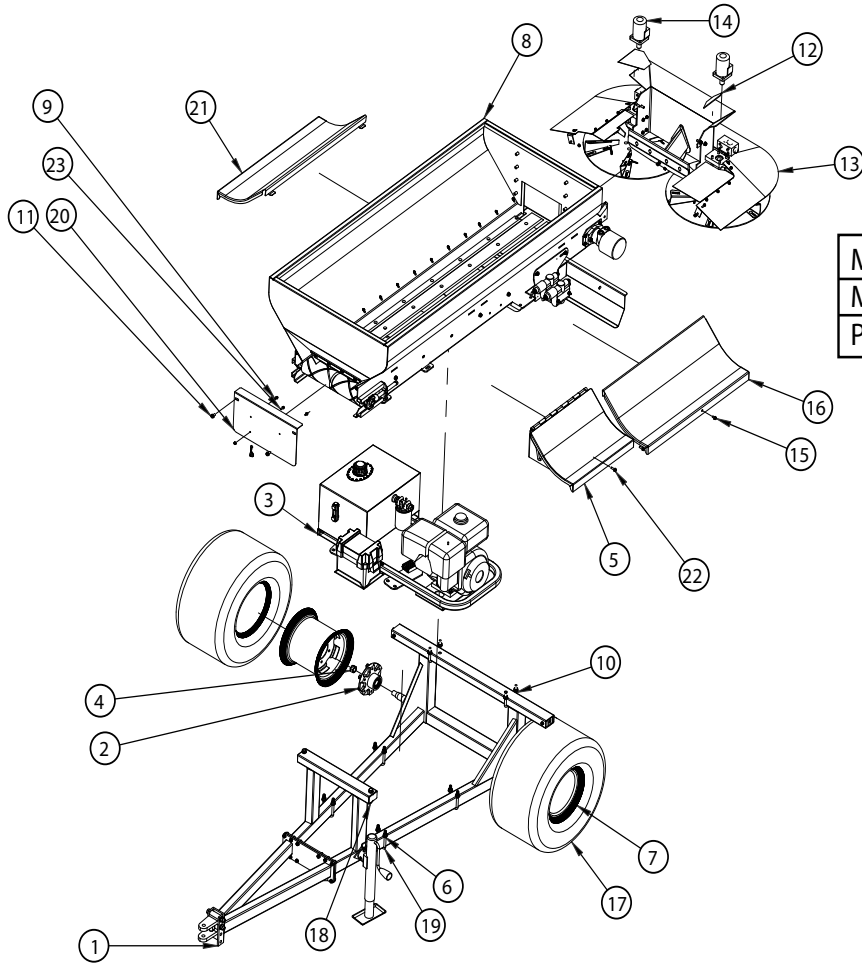
Ref.	Description	p/n
1	Control Box w/Cord	17083
2	Strain Relief	10056
3	Control Box Assembly	21532
4*	Weather-Pac Housing	21036

\* Not illustrated



Ref.	Description	p/n
1	Boot	10192
2	Switch	11177
3	Wiring Bundle	11894
4	Decal	14673
5	Eyelet	21035
6	Box	21536
7	Screw	21538
8	Lid	21539
9	Control Box Assembly	21532

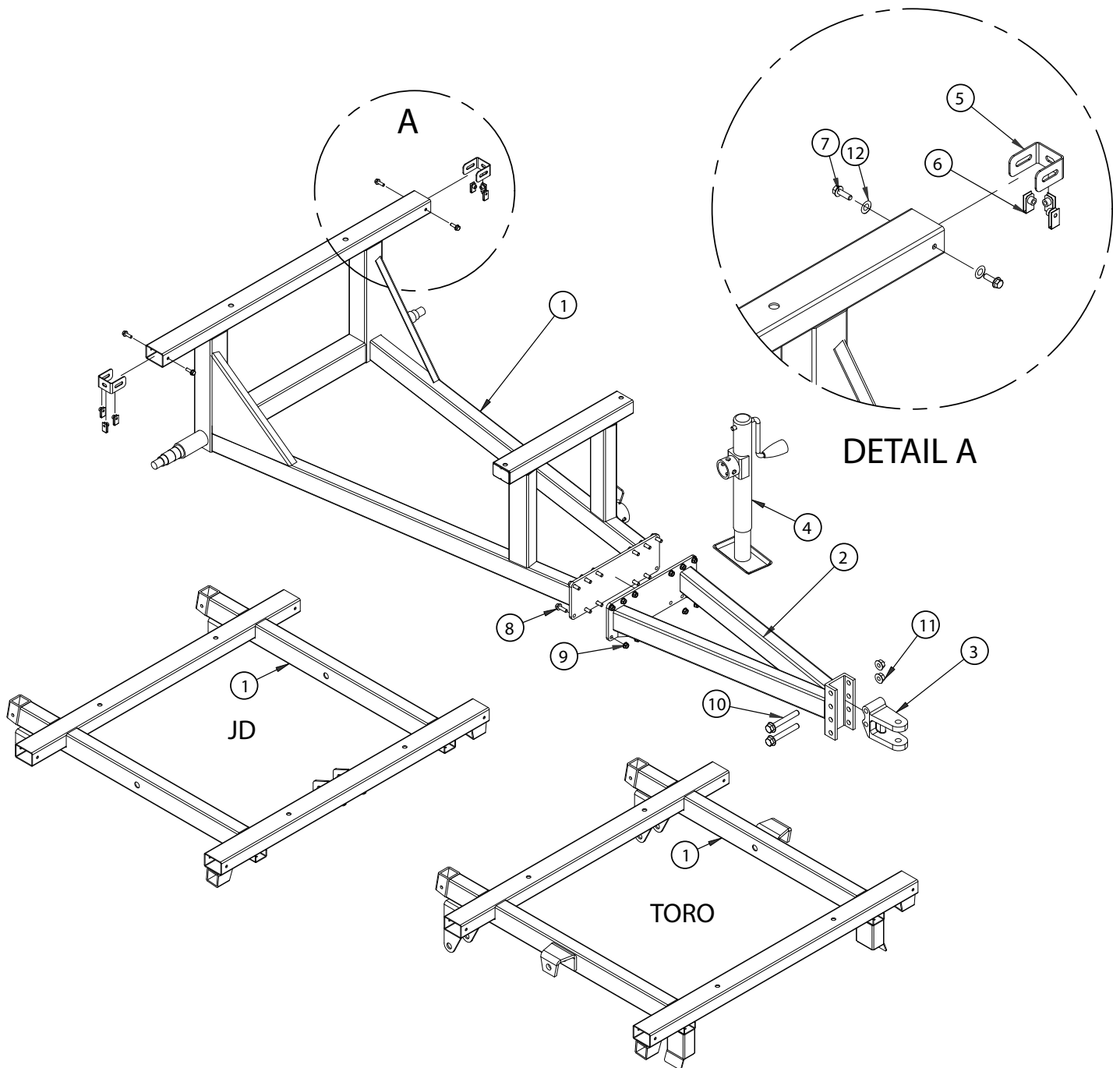
# FULL MACHINE 410



Manual Fenders (Left) p/n	
Mounted	13825
Pull-type & 410 J	13826

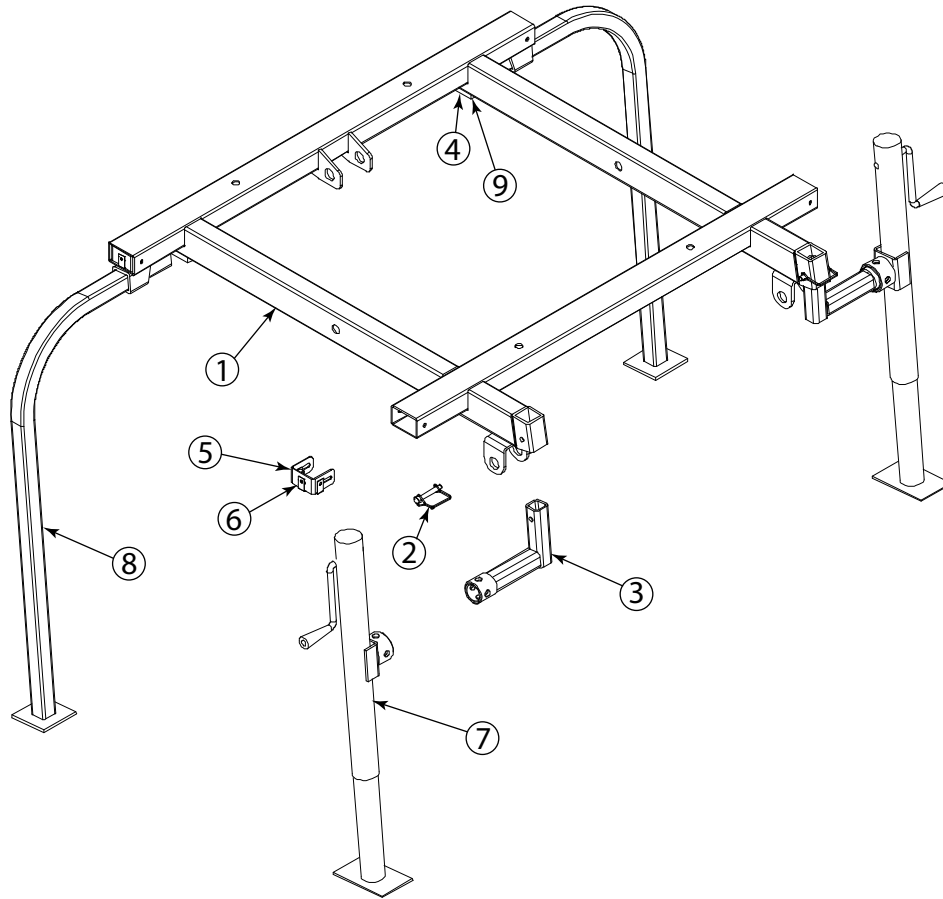
Ref.	Description	410 p/n	410 (JD) p/n	410 (TORO) p/n	410J p/n
1	Frame Assembly	16621	14013	13815	16738
2	Hub, Idler Assembly	10050	N/A	N/A	N/A
3	Power Package	14022	N/A	N/A	N/A
4	Nut, Castle	4D14	N/A	N/A	N/A
5	Hood Assembly	13937	N/A	N/A	N/A
6	Nut, Flanged	89D08	89D08	89D08	89D08
7	Wheel	10051	N/A	N/A	N/A
8	Hopper Assembly	14062	14062	14062	16744
9	Screw, Flange Head	SS1C0416	N/A	N/A	N/A
10	U-Bolt	10189	10189	10189	10189
11	Screw, Flange Head	SS1C0616	SS1C0616	SS1C0616	SS1C0616
12	Strip, Filler	10374	10374	10374	10374
13	Spinner Assembly	13804	13804	13804	13804
14	Motor, Hydraulic	10018	10018	10018	10018
15	Screw, Flange Head	SS1C0516	SS1C0516	SS1C0516	SS1C0516
16	Fender - Left Side	13805	13811	13811	13805
17	Tire	10052	N/A	N/A	N/A
18	Screw, Flange Head	31C0856	31C0856	31C0856	31C0856
19	U-Bolt	10186	N/A	N/A	N/A
20	Front Shield	16987	16987	16987	16987
21	Fender - Right Side	13806	13812	13812	13806
22	Bolt, Flange Head	SS1C0516	N/A	N/A	N/A
23	Screw, Flange Head	SS1C0412	N/A	N/A	N/A

# FRAME ASSEMBLY 410



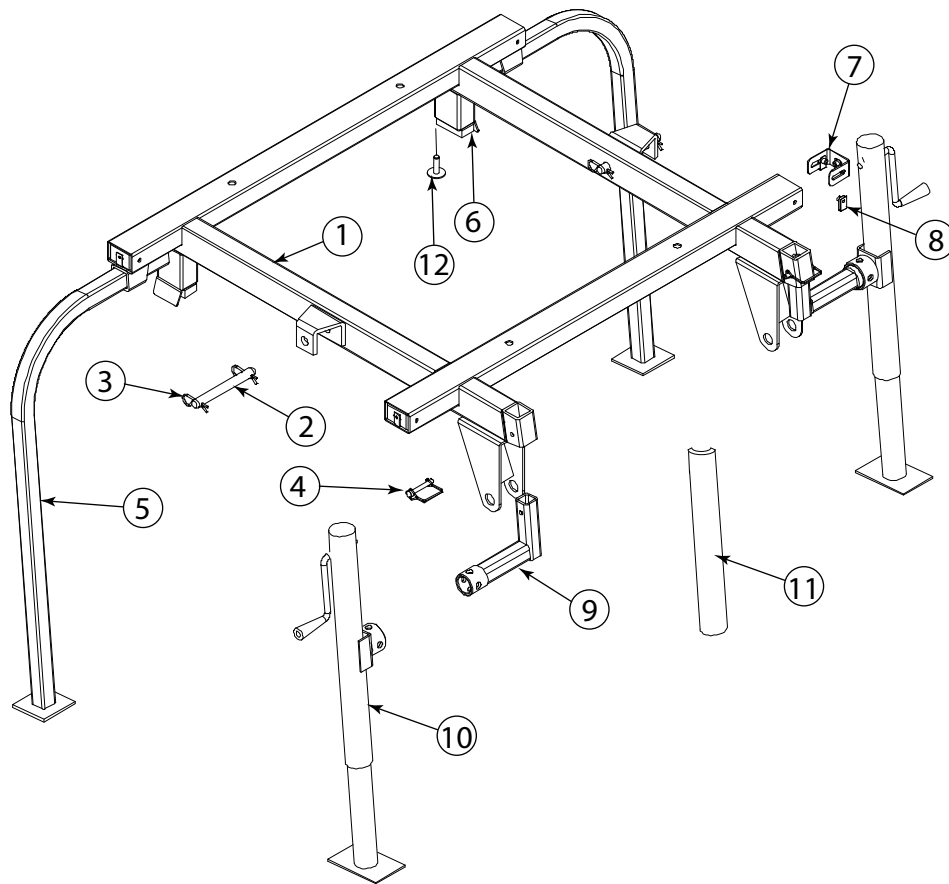
Ref.	Description	410 p/n	410 (JD) p/n	410 (TORO) p/n
	Assembly	16621	N/A	N/A
1	Frame	13772	14013	13815
2	Tow Bar	11582	N/A	N/A
3	Hitch, Clevis	10004	N/A	N/A
4	Jack, Side Swivel	10003	N/A	N/A
5	Bracket, Mount	11840	11840	11840
6	Nut, Speed	11841	11841	11841
7	Screw, Flange Head	SS1C0516	SS1C0516	SS1C0516
8	Screw, Flange Head	35C0620	N/A	N/A
9	Nut, Flanged	89D06	N/A	N/A
10	Bolt, Flange Head	31C1072	N/A	N/A
11	Nut, Flanged	89D10	N/A	N/A
12	Washer	SS25E15	SS25E15	SS25E15

# FRAME AND JACKSTAND (JOHN DEERE) 410



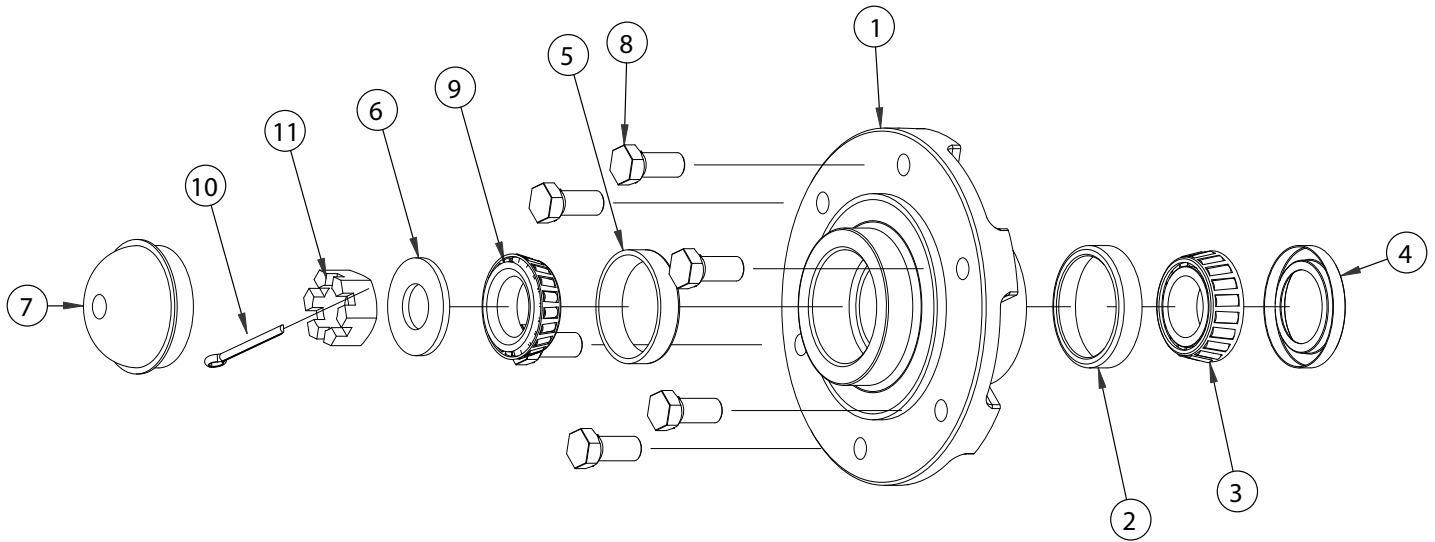
Ref.	Description	p/n
1	Frame	14013
2	Pin	10900
3	Jackstand Arm	12253
4	Bumper Block	15546
5	Bracket – Adjustable Mount	11840
6	Speed Nut	11841
7	Jack	12234
8	Jackstand	10933
9	Screw	15558

# FRAME AND JACKSTAND (TORO) 410



Ref.	Description	p/n
1	Frame	13815
2	Pin Cylinder Mount	10899
3	Clip	10901
4	Pin	10900
5	Jackstand	10933
6	Bumper Block	10902
7	Bracket – Adjustable Mount	11840
8	Speed Nut	11841
9	Jackstand Arm	12253
10	Jack	12234
11	Cylinder Lock	10932
12	Rivet	10289

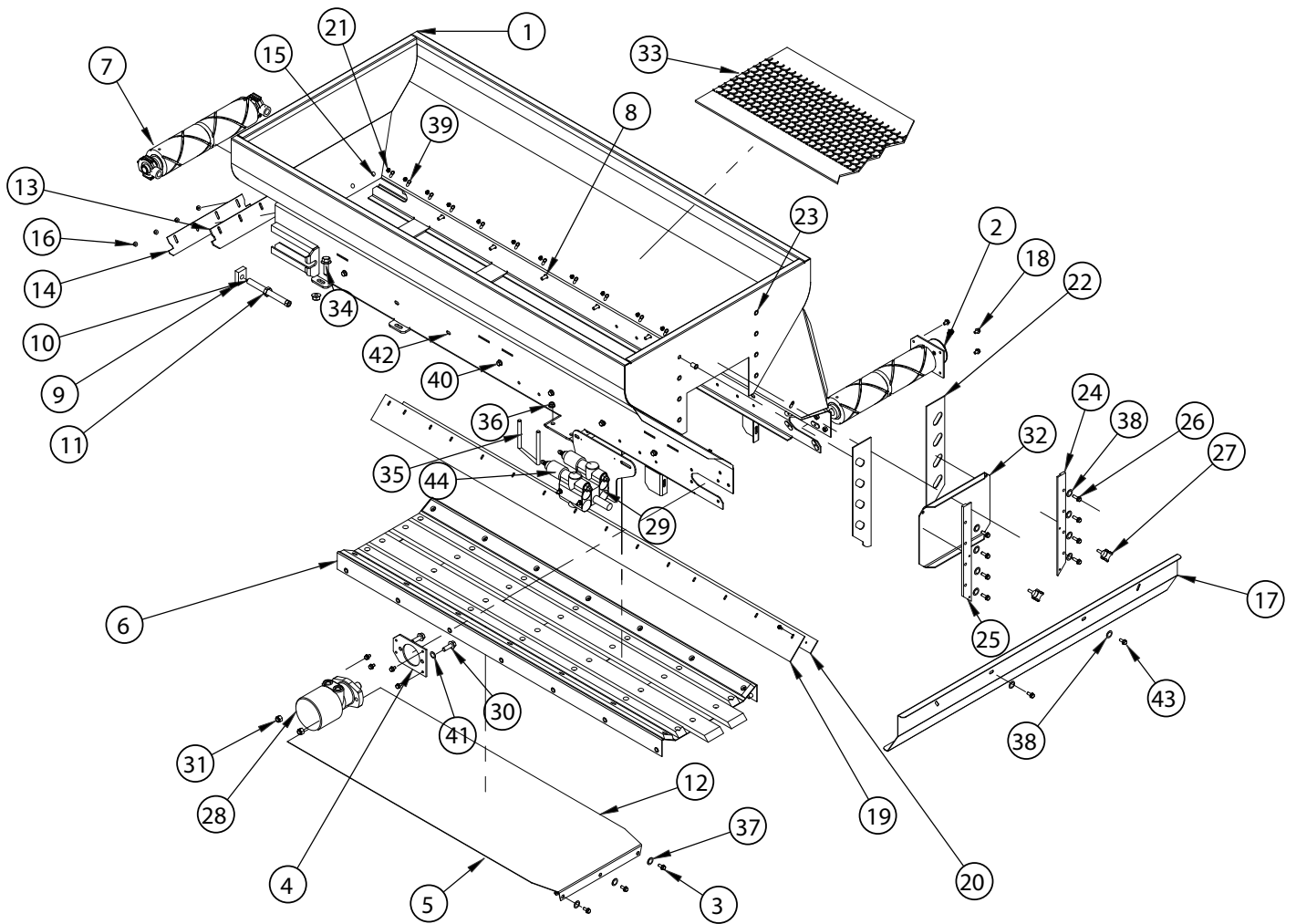
# WHEEL HUB 410



Ref.	Description	410 p/n	410 (JD) p/n	410 (TORO) p/n
1	Hub*	12659	N/A	N/A
	Hub Assy (inc. 2-9)	10050	N/A	N/A
2	Cup, Inner	10203	N/A	N/A
3	Bearing, Inner	10205	N/A	N/A
4	Seal	10208	N/A	N/A
5	Cup, Outer	10204	N/A	N/A
6	Washer	27E14	N/A	N/A
7	Hub Cap	10207	N/A	N/A
8	Lug Bolt	10209	N/A	N/A
9	Bearing, Outer	10206	N/A	N/A
10	Pin, Cotter	1F0532	N/A	N/A
11	Nut, Castle	4D14	N/A	N/A

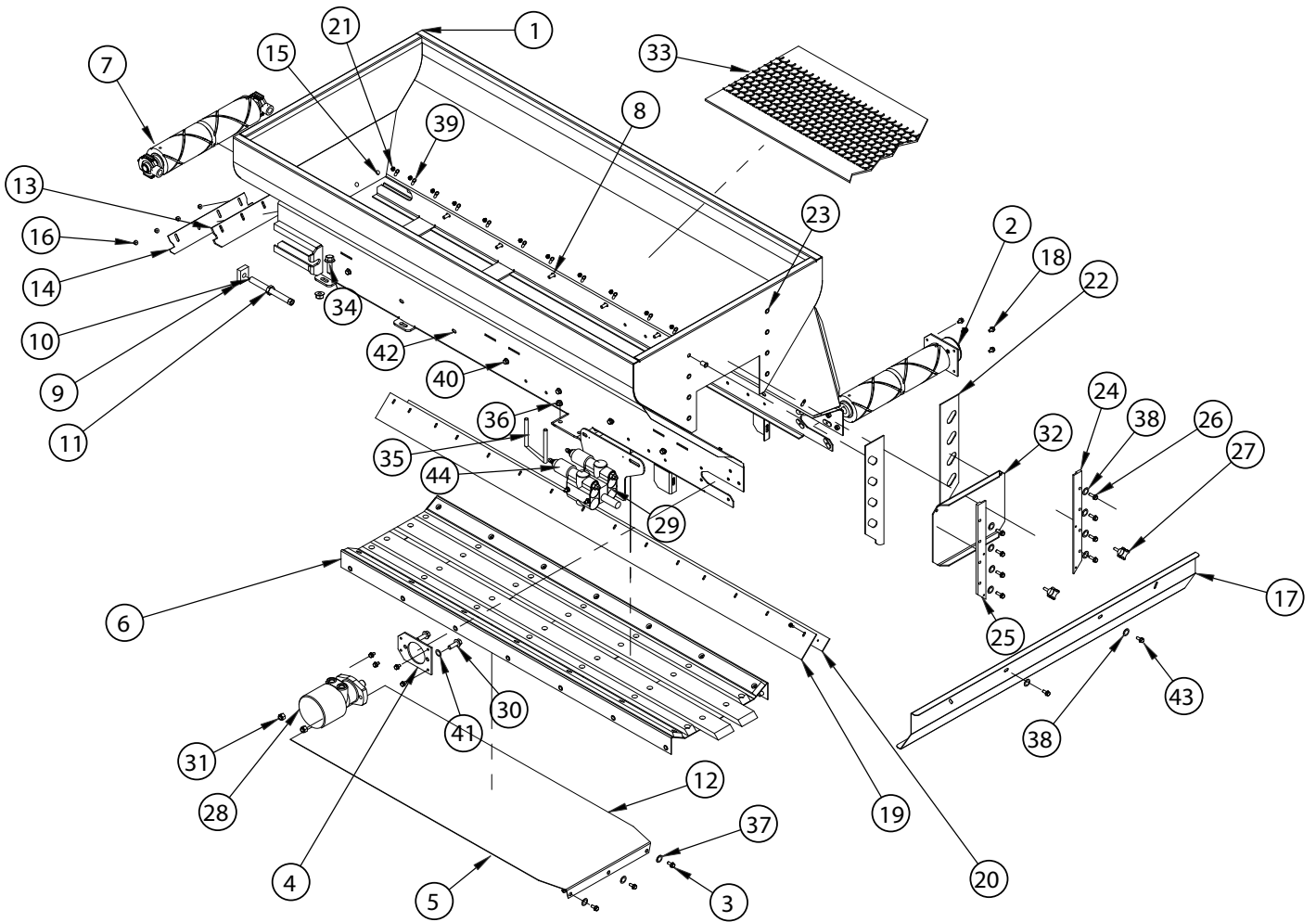
\* Includes Inner Cups

# HOPPER ASSEMBLY 410



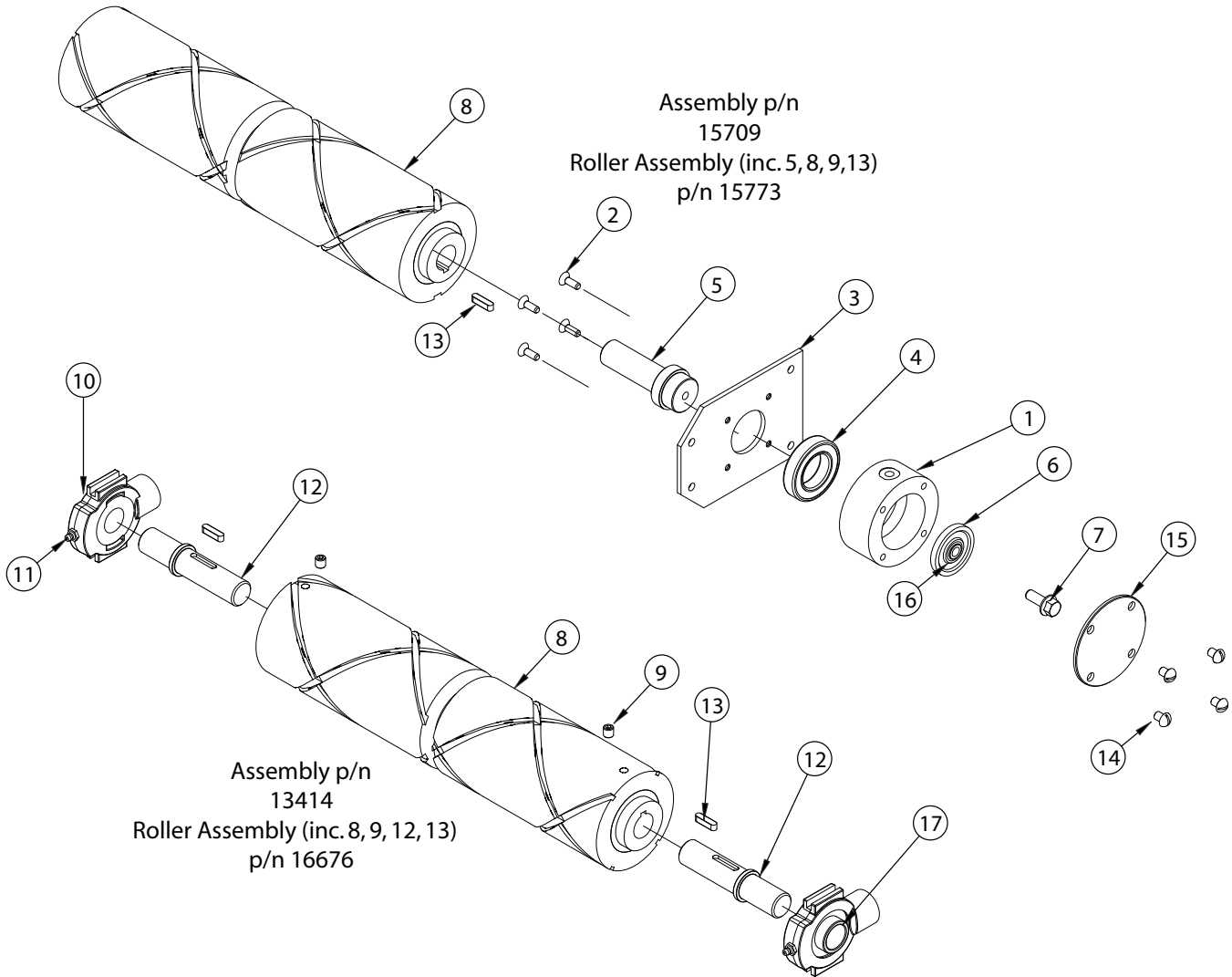
Ref.	Description	410 p/n	410 JD p/n	410 TORO p/n	410J p/n
1	Hopper	16982	16982	16982	16983
2	Roller Assembly	15709	15709	15709	15709
3	Screw, Flange Head	SS1C0412	SS1C0412	SS1C0412	SS1C0412
4	Plate, Motor Mount	13769	13769	13769	13769
5	Nut	SS59D04	SS59D04	SS59D04	SS59D04
6	Conveyor Pan Assembly	10876	10876	10876	16722
7	Front Roller Assembly	13414	13414	13414	13414
8	Screw, Flange Head	SS1C0616	SS1C0616	SS1C0616	SS1C0616
9	Nut, Belt Adjuster	10015	10015	10015	10015
10	Adjustment Screw	10016	10016	10016	10016
11	Nut, Jam	7D12	7D12	7D12	7D12
12	Panel, Belly Pan	11637	11637	11637	17075
13	Seal, Front End	13479	13479	13479	13479
14	Plate, Seal Backer	13478	13478	13478	13478
15	Bolt	SS37C0420	SS37C0420	SS37C0420	SS37C0420
16	Nut, Flange	SS59D04	SS59D04	SS59D04	SS59D04
17	Shield, Rear	10009	10009	10009	10009
18	Cap Screw, Hex Head	SS1C0516	SS1C0516	SS1C0516	SS1C0516
19	Wiper, Rubber	13535	13535	13535	16746
20	Retainer, Wiper	13534	13534	13534	16745
21	Bolt	SS84G2516	SS84G2516	SS84G2516	SS84G2516
22	Seal, Rear Door	13553	13553	13553	13553

# HOPPER ASSEMBLY (CONTINUED) 410



Ref.	Description	410 p/n	410 JD p/n	410 TORO p/n	410J p/n
23	Rivnut	16724	16724	16724	16724
24	Track, Rear Door RH	13367	13367	13367	13367
25	Track, Rear Door LH	13368	13368	13368	13368
26	Bolt	SS1C0520	SS1C0520	SS1C0520	SS1C0520
27	Knob, Rear Door Lock	10012	10012	10012	10012
28	Motor, Conveyor	10201	10201	10201	10201
29	Valve Assembly	14043	14043	14043	14043
30	Screw, Flange Head	SS1C0828	SS1C0828	SS1C0828	SS1C0828
31	Nut, Nylock	SS59D08	SS59D08	SS59D08	SS59D08
32	Panel, Rear Flow Door	14469	14469	14469	14469
33	Belt	13587	13587	13587	17013
34	Screw	31C0856	31C0856	31C0856	31C0856
35	U-Bolt	10186	10186	10186	10186
36	Nut	89D06	89D06	89D06	89D06
37	Washer	SS25E13	SS25E13	SS25E13	SS25E13
38	Washer	SS25E15	SS25E15	SS25E15	SS25E15
39	Washer	14792	14792	14792	14792
40	Bolt	SS1C0620	SS1C0620	SS1C0620	SS1C0620
41	Washer	SS25E21	SS25E21	SS25E21	SS25E21
42	Washer	SS25E17	SS25E17	SS25E17	SS25E17
43	Screw	SS1C0512	SS1C0512	SS1C0512	SS1C0512
44	Solenoid	13164	13164	13164	13164

# DRIVE ROLLERS 410

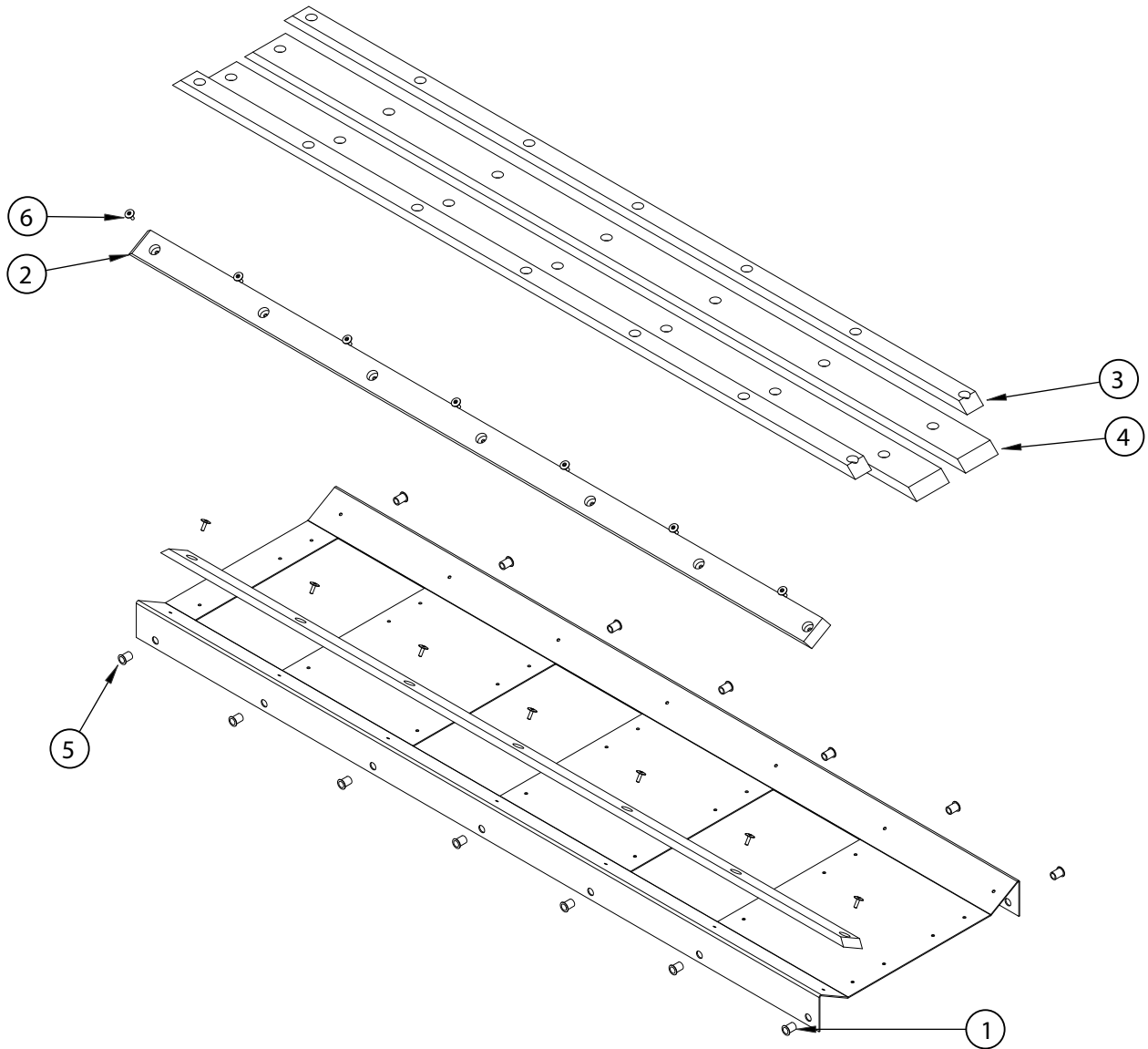


Ref.	Description	410 p/n	410 (JD) p/n	410 (TORO) p/n
1	Bearing Mount	13887	13887	13887
2	Screw, Countersunk	SS1C0516	SS1C0516	SS1C0516
3	Plate, Bearing Mount	15708	15708	15708
4	Bearing	13255	13255	13255
5	Roller Insert	13212	13212	13212
6*	Magnetic Wheel	14216	14216	14216
7	Screw, Flange Head	45C0620	45C0620	45C0620
8	Roller, Main Conveyor	13211	13211	13211
9	Set Screw	15G0608	15G0608	15G0608
10	Bearing Assembly	13035	13035	13035
11	Grease Fitting	10H25	10H25	10H25
12	Roller Insert	13213	13213	13213
13	Key	16627	16627	16627
14	Screw	14097	14097	14097
15	Cover	13706	13706	13706
16**	Spacer	15854	15854	15854
17	Bearing	10034	10034	10034

\* Electric Models

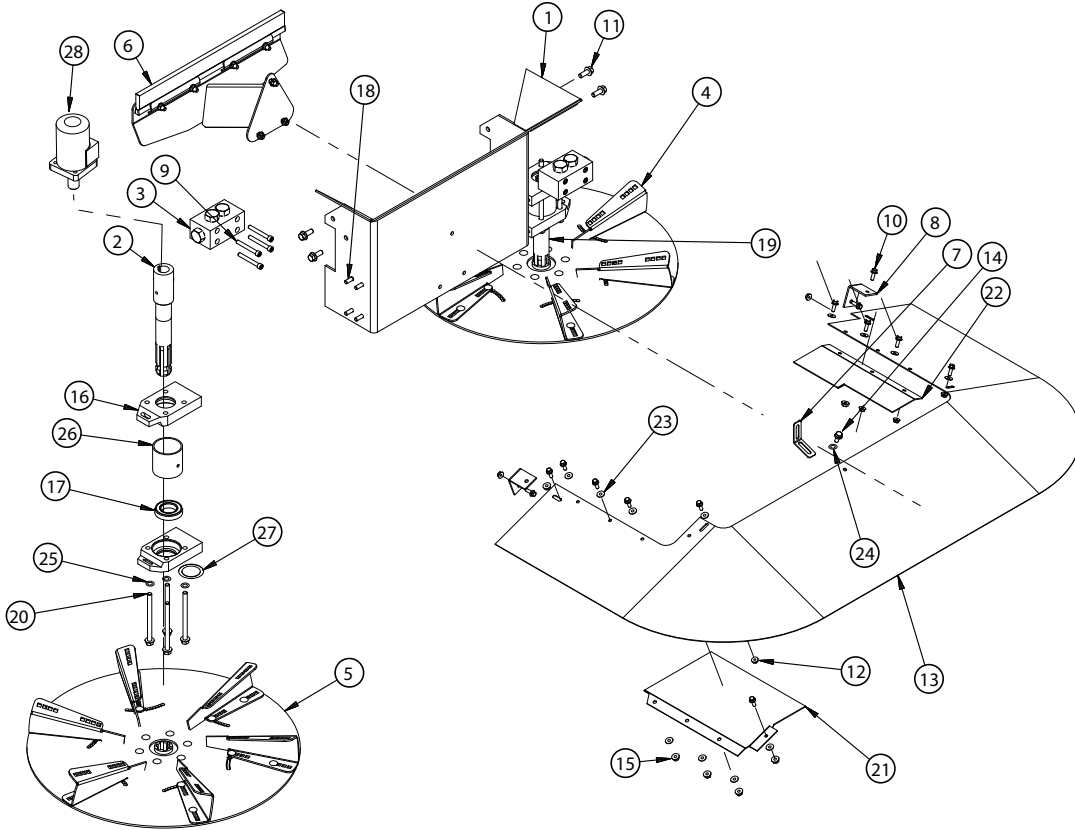
\*\* Manual Models

# CONVEYOR 410



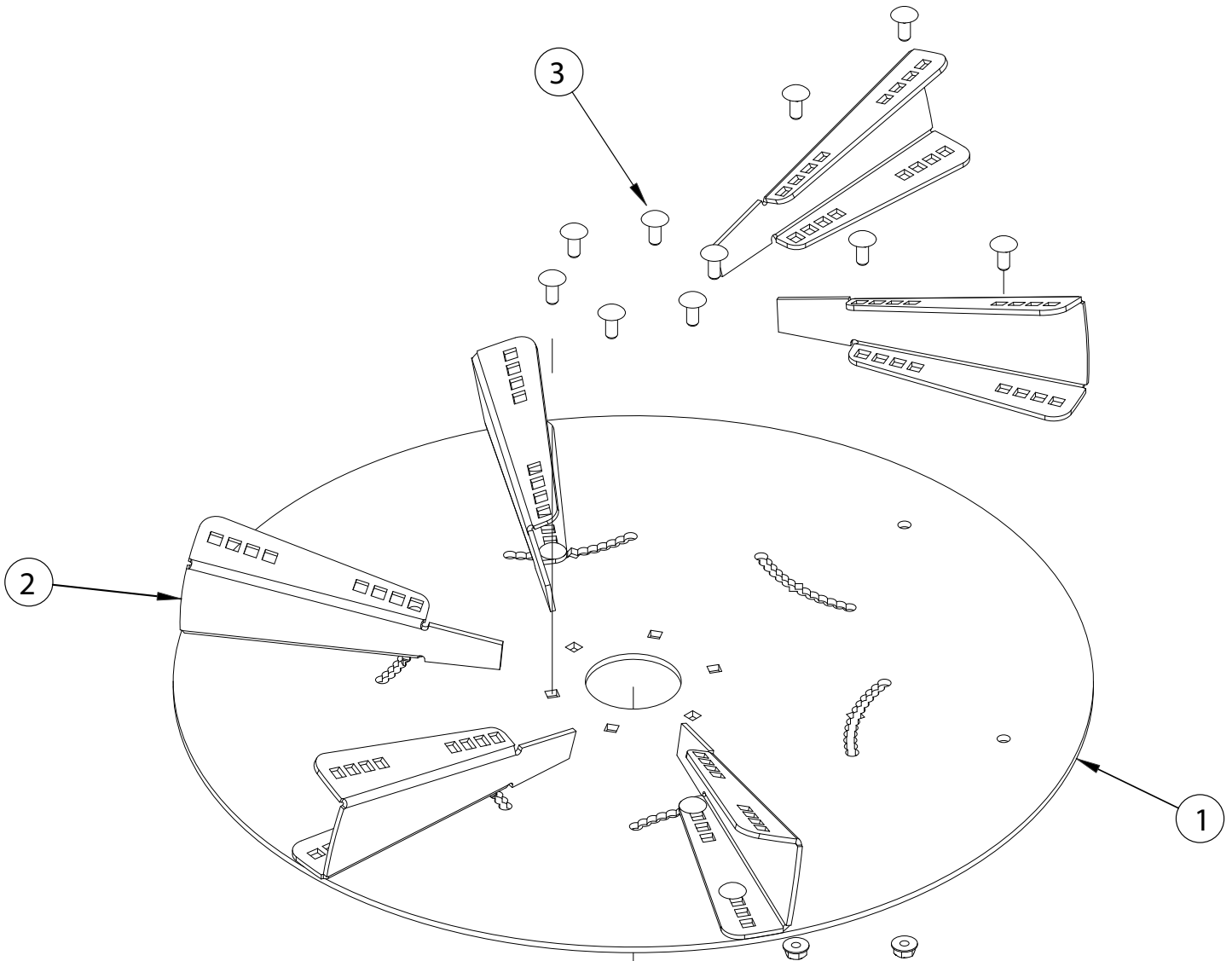
Ref.	Description	410 p/n	410 (JD) p/n	410 (TORO) p/n
1	Panel, Conveyor Floor	10877	10877	10877
2	Strip, Belt Support	11610	11610	11610
3	Strip, Belt Support	10880	10880	10880
4	Strip, Belt Support	10879	10879	10879
5	Rivnut	16724	16724	16724
6	Rivet	10289	10289	10289

# SPINNER ASSEMBLY 410



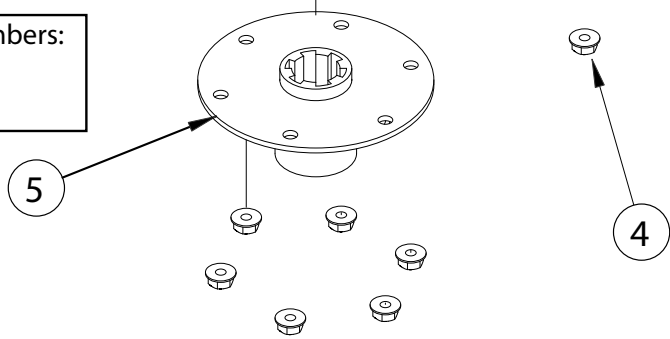
Ref.	Description	410 p/n	410 (JD) p/n	410 (TORO) p/n
1	Spinner Chute	13802	13802	13802
2	Spinner Shaft	10020	10020	10020
3	Bypass Valve	10019	10019	10019
4	Assy, Disk White RH	12546	12546	12546
5	Assy, Disk White LH	12545	12545	12545
6	Assy, Brush	11645	11645	11645
7	Brace, Spinner Shield	12194	12194	12194
8	Shield Mount	10379	10379	10379
9	Screw, Socket Head	SS73G0540	SS73G0540	SS73G0540
10	Screw, Flange Head	SS1C0412	SS1C0412	SS1C0412
11	Screw, Flange Head	35C0616	35C0616	35C0616
12	Nut, Flange Head	SS59D04	SS59D04	SS59D04
13	Spinner Shield	14100	14100	14100
14	Screw, Flange Head	SS1C0512	SS1C0512	SS1C0512
15	Nut, Flange Head	SS59D05	SS59D05	SS59D05
16	Holder, Spinner Motor	13251	13251	13251
17	Bearing	13255	13255	13255
18	Screw, Flange Head	SS1C0516	SS1C0516	SS1C0516
19	Tube, Spinner Bearing	13256	13256	13256
20	Screw, Flange Head	17C0680	17C0680	17C0680
21	Plate, Filler Shield LH	14101	14101	14101
22	Plate, Filler Shield RH	10361	10361	10361
23	Washer	SS25E13	SS25E13	SS25E13
24	Washer	SS25E15	SS25E15	SS25E15
25	Lock Washer	6E06	6E06	6E06
26	Tube, Spinner Bearing	16594	16594	16594
27	Seal	18119	18119	18119
28	Spinner Motor	10018	10018	10018

# SPINNER 410



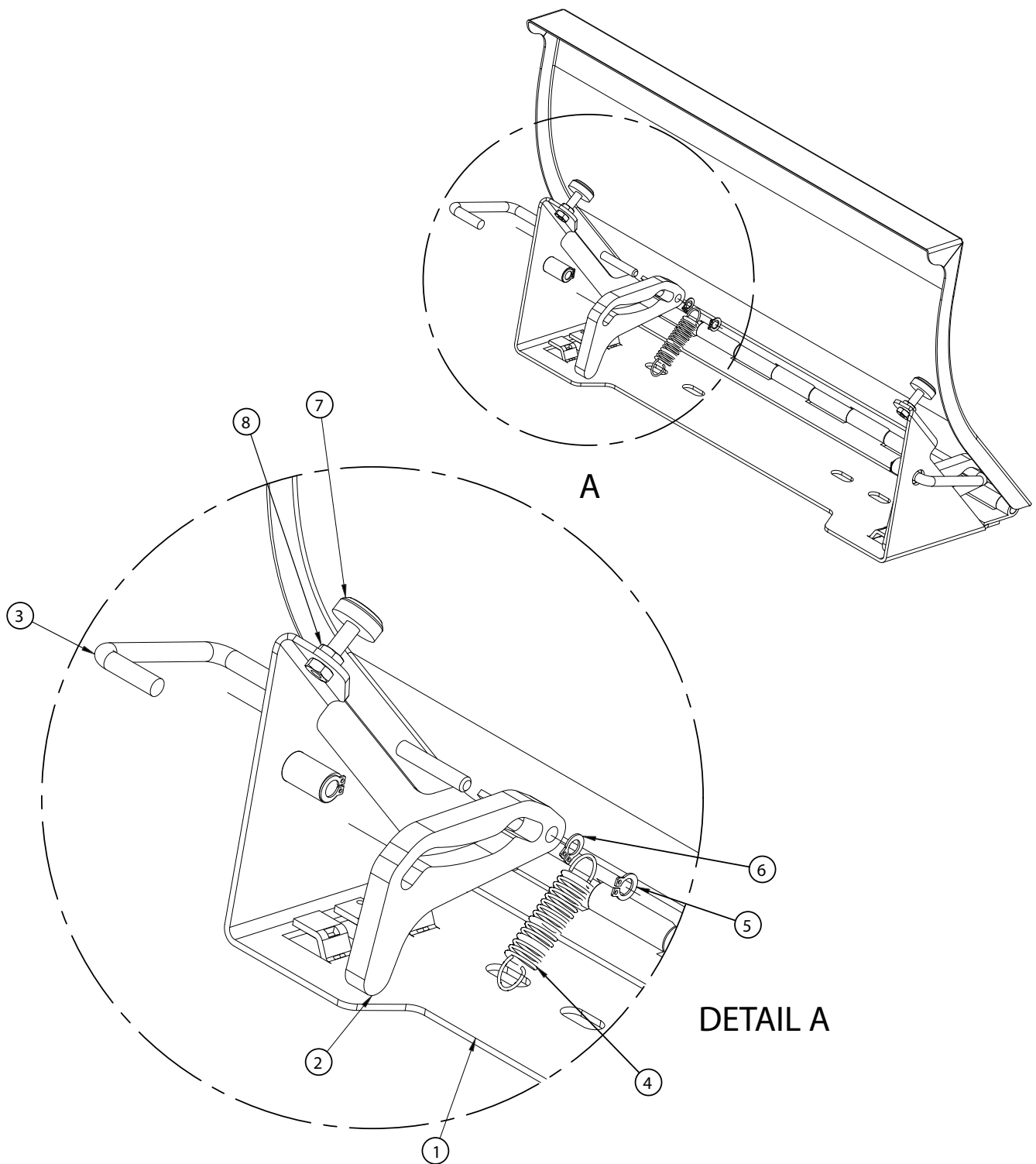
LEFT AND RIGHT SPINNER DISK ASSEMBLIES USE THE SAME COMPONENTS. LEFT SHOWN

Assembly part numbers:	
RH	12546
LH	12545



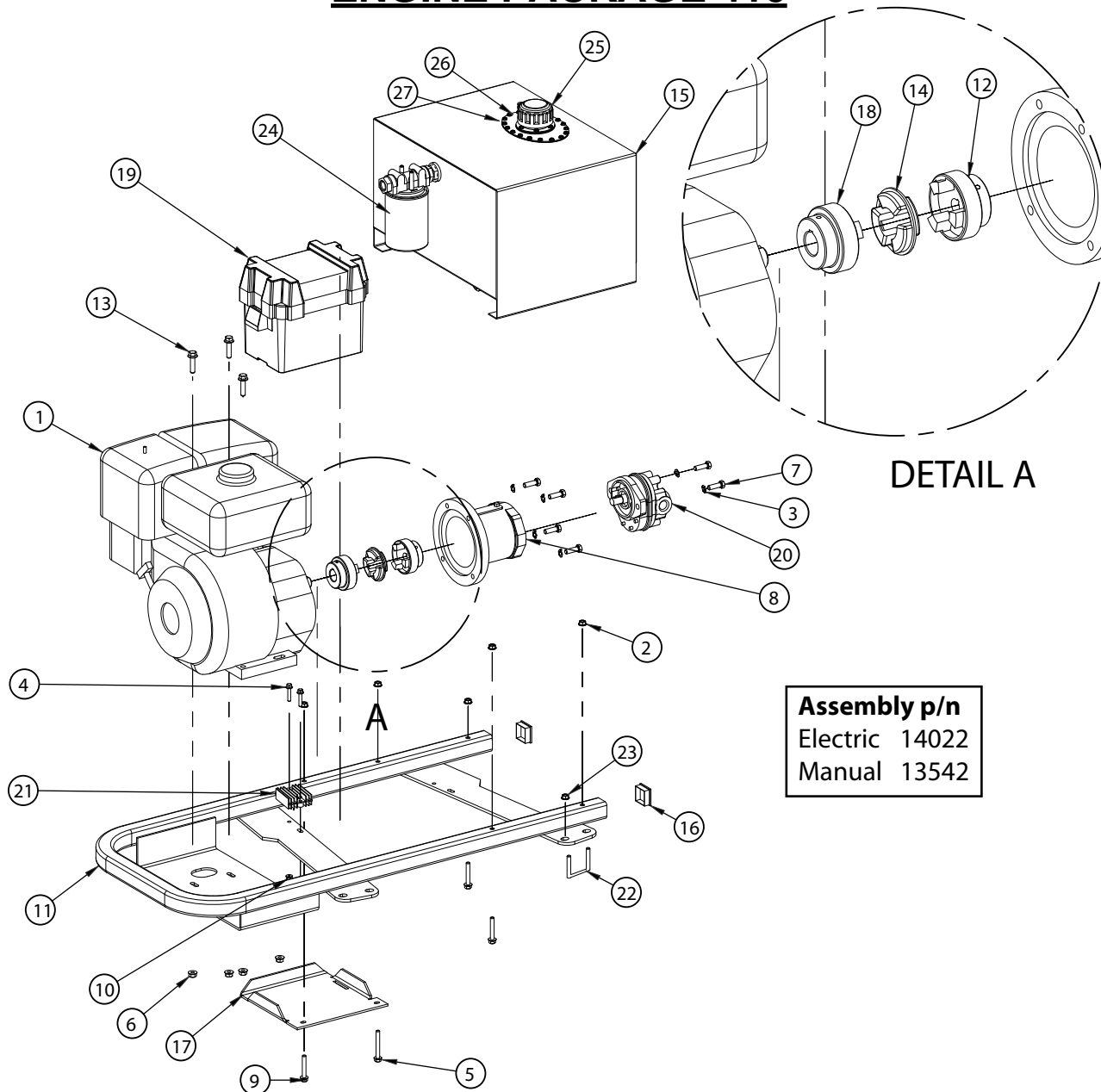
Ref.	Description	410 p/n	410 (JD) p/n	410 (TORO) p/n
1	Spinner Disk	12543	12543	12543
2	Blade, Spinner	12539	12539	12539
3	Bolt, Carrage	10C0512	10C0512	10C0512
4	Nut, Flange Head	55D05	55D05	55D05
5	Hub	13954	13954	13954

# HOOD ASSEMBLY 410



Ref.	Description	410 p/n
1	Hood	13936
2	Cam, Hood	12063
3	Hood Latch	12065
4	Spring, Extension	12072
5	Snap Ring	12069
6	Snap Ring	12070
7	Bumper, Rubber	12068
8	Jam Nut	7D05

# ENGINE PACKAGE 410



**Assembly p/n**  
 Electric 14022  
 Manual 13542

Ref.	Description	410 p/n
1	Honda Engine	11729
2	Nut	89D05
3	Washer, Lock	26E06
4	Screw, Flange Head	35C0412
5	Bolt	35C0540
6	Nut	89D06
7	Bolt	1C0620
8	Mount, Pump	10202
9	Screw, Flange Head	35C0532
10	Nut	83D04
11	Engine Frame	11728
12	Coupler, Half	11731
13	Screw, Flange Head	35C0628
14	Insert	10590

Ref.	Description	410 p/n
15	Hydraulic Tank	11669
16	Plug, End Cap	11730
17	Bracket, Battery Box	11621
18	Coupler	10589
19	Box, Battery	11661
20	Pump	11673
21	Rectifier	11944
22	U-Bolt	10186
23	Nut	89D08
24	Filter	10042
25	Cap	10040
26	Cover, Access	11667
27	Gasket, Access	11668
*	Sight Gauge	10041

\* Not Illustrated

# HARNES REFERENCE GUIDE

## *Electrical Harnesses And Control Boxes For 2016 And Newer*

### **410 Electric Pull Type w/o Engine**

20299 Controller  
12083 Power From Tractor  
14627 Power Extension  
14616 Tach Sensor X 2

### **410 Manual Pull Type w/o Engine**

12083 Power From Tractor  
17083 Control Box  
11209 Harness Main

### **410 Electric Pull Type w/engine**

20299 Controller  
21105 Harness-auto Load  
20305 Power Fused  
14616 Tach Sensor X2

### **C4112 410 Manual Pull Type w/engine**

11205 Battery/starter  
11209 Main Control Box To Outputs  
13422 Spinner Stop  
14856 Power Fused  
21532 Control Box

### **410 Electric JD**

20299 Controller  
14616 Tach Sensor X2  
20305 Power Fused

### **410 Manual JD**

14856 Power Fused  
21532 Control Box

### **410 Electric Toro Hiflow**

20299 Controller  
20305 Power Fused  
14616 Tach Sensor X 2

### **410 Manual Toro Hiflow**

11209 Main Control Box To Outputs  
14856 Power Fused  
21532 Control Box

### **411 Electric**

20299 Controller  
12083 Power From Tractor  
14616 Tach Sensor X 2  
14627 Power Extension

### **411 Manual**

11209 Main Control Box To Outputs  
12083 Power From Tractor  
17083 Control Box  
14627 Power Extension

### **Hydraulic Kit Toro Diesel/Gas**

11234 Toro Harness

### **412 Electric**

20299 Controller  
12083 Power From Tractor  
14616 Tach Sensor X 2  
20298 Brake Harness 2 / 4  
20295 Harness-Vibrator Single

### **412 Manual**

12515 Power  
12516 Harness Brake/Power Input  
12518 Main Control Box To Outputs  
17083 Control Box

### **420 Electric**

12083 Power From Tractor  
12085 Brake  
12086 Harness Tach  
12088 Valves To Motors  
12090 Box (Internal) Valves  
12284 Assy Brake  
10331 Assy Power 6" Going Into Box To Fuse Block  
12089 Rear Valve Harness

### **414 Electric**

20299 Controller  
14616 Tach Sensor X 2  
14627 Power From Tractor  
20298 Brake Harness 2 / 4  
20295 Harness Vibrator Single  
20942 Dual Vibrator Harness

### **414 Manual**

12515 Power  
12516 Harness Brake/Power Input  
12518 Main Control Box To Outputs  
17083 Control Box

### **440 Electric**

12083 Power From Tractor  
12085 Brake  
12086 Harness Tach  
12088 Valves To Motors  
12090 Box (Internal) & Valves  
12284 Assy-brakes  
10331 Assy Power 6" Going Into Box To Fuse Block  
12089 Rear Valve Harness

### **20299 Controller**

20300 Controller Programmed  
20301 Display W/ram Mount Power Switch  
20302 Harness Hitch Frame To Machine  
20303 Harness Hitch To Display  
20304 Harness Main Frame To Machine

### **17083 Control Box**

10056 Clamp Strain Relief  
21532 Assy Box Control Switch  
21036 Weather Pac Female 2 Pin Housing

### **21532 Control Box**

10192 Switch Cover  
11177 Switch  
11894 Bundle Wiring Cntrl Box  
14673 Decal  
21035 Eyelet  
21536 Box  
21538 Screw  
21539 Lid

#### **Machines That Use**

#### **Control Box p/n 17083**

410 Manual Without Engine  
411 Manual  
412 Manual  
414 Manual

#### **Machines That Use**

#### **Control Box p/n 21532**

410 Manual With Engine  
410 JD Manual  
410 Toro Hi Flow

# WARRANTY

**DAKOTA PEAT & EQUIPMENT is hereinafter called DAKOTA™.**

## **(A) Warranty.**

DAKOTA™ warrants all products manufactured by it to be free from defects in material and manufactured at the time of shipment and for twelve (12) months from date of delivery to customer. DAKOTA™ will furnish to the dealer, without charge, f.o.b. East Grand Forks, Minnesota, replacements for such parts as DAKOTA™ finds to have been defective at the time of shipment; or at DAKOTA™'s option, will make or authorize repairs to such parts, provided that, upon request, such parts are returned, transportation prepaid, to the factory at East Grand Forks, Minnesota.

This warranty shall not apply to any product that has been subjected to misuse, misapplication, neglect (including but not limited to improper maintenance), accident, improper installation, modification (including but not limited to use of unauthorized parts or attachments), adjustment, or repair. Engines, motors, and any accessories furnished with DAKOTA™'s products, but which are not manufactured by DAKOTA™, are not warranted by DAKOTA™ but are sold only with the express warranty, if any, of the manufacturers thereof. **THE FOREGOING IS IN LIEU OF ALL OTHER WARRANTIES, WHETHER EXPRESS OR IMPLIED (INCLUDING THOSE OF MERCHANTABILITY AND FITNESS OF ANY PRODUCT FOR A PARTICULAR PURPOSE), AND OF ANY OTHER OBLIGATION OF LIABILITY ON THE PART OF DAKOTA.**

## **(B) Limitation of Liability.**

It is expressly understood that DAKOTA™'s liability for its products, whether due to breach of warranty, negligence, strict liability, or otherwise, is limited to the furnishing of such replacement parts, and DAKOTA™ will not be liable for any other injury, loss, damage, or expense, whether direct or consequential, including but not limited to loss of use, income, profit, or production, or increased cost of operation, or spoilage of or damage to material, arising in connection with the sale, installation, use, or inability to use, or the repair or replacement of, DAKOTA™'s products.

Any operation expressly prohibited in the operating instructions or manuals furnished with the machine, or any adjustment, or assembly procedure not recommended or authorized in the operating or service instructions shall void such warranty.

## **(C) Registration.**

**THIS WARRANTY IS VOID UNLESS YOUR DEALER COMPLETED AND RETURNED A "NEW PRODUCT REGISTRATION AND WARRANTY" CARD TO DAKOTA™ WITHIN 30 DAYS AFTER DELIVERY OF UNIT TO CUSTOMER.**

**No Parts shall be returned under warranty unless a Return Goods Authorization (RGA) is obtained from DAKOTA™.**

**ALWAYS GIVE PART NAME, NUMBER AND MACHINE SERIAL NUMBER WHEN ORDERING PARTS.**

**NOTE: DAKOTA reserves the right to make changes to design or construction without obligation to incorporate such changes in equipment previously sold.**

The tire manufacturer's warranty supplied with your Turf Tender may not apply outside the U.S.

*YOUR DEALER IS RESPONSIBLE FOR COMPLETION OF THE PRODUCT REGISTRATION CARD AND RETURNING IT TO DAKOTA AS SOON AS YOU TAKE DELIVERY OF YOUR TURF TENDER.*

## **D) Parts, Service, and Warranty**

Contact your local dealer for parts, service, and warranty.

**Warranty will be denied if the registration  
and warranty card is not sent in within 30  
days after delivery.**